



Arabian Philatelic Association

c/o Aramco, Box 1929
Dhahran, Saudi Arabia

ARABIAN PHILATELIC ASSOCIATION

WINTER, 1983

Random Notes No. 26

1. Does anybody have anything definite on the "newspaper" stamps of the Nejd? Most of our information, including that obtained directly from the Saudi Arab Government, says that they were not officially released. However, my memory says that there was a legitimate wrapper bearing one of these stamps shown in an exhibition in India a few years ago. I would appreciate more information. I tried to follow up on the India thing at the time without success.

2. We have some dates of issue for recent Saudi Arabian commemorative sets:

20ha, 65ha	1983 Pilgrimage	16 Sep 83
20ha, 80ha	Post & Telephone	8 Oct 83
20ha, 65ha	Riyadh Airport	16 Nov 83

Jim Kearney has October 3 for the Post & Telephone set. The above dates were from Linn's except for the Riyadh Airport set. For the first two sets, Linn's reports 350,000 sets printed.

More from Old Random Notes

3. The signature that appears as a stretched-out line of writing in the second watermark is that of Aba al-Khayl, the Minister of Finance.

4. Use of official stamps ceased about the middle of 1974. It has not been legal to sell these stamps to the public for some time, but nothing is known about earlier practice in this regard.

5. In Random Notes No. 6, it was noted that "use of stamps showing Sa'ud's cartouche will shortly cease." There was a short grace period, during which existing stocks were distributed to the post offices so that they could be used up as much as possible in the allotted time. Remaining stocks were then sent back to Riyadh for destruction. Nothing is known about the quantities actually destroyed.

6. During a visit to the Security Press on March 15, 1975, it was discovered that the set honoring the one hundredth anniversary of the UPU was subsequently frowned upon by the authorities because it showed the human form, which is contained in the symbol of the UPU as shown on the stamps. Those who made the visit were told that the set was printed in quantities of 200,000 but that many would probably not be distributed. The APA was able to obtain an adequate supply of these stamps when first issued. In fact, there was an over-supply, and the new issue agent for the APA sold 200 sets back to the post office. Later, the postal officials wrote us and asked for additional sets, which we could not supply. This may explain why the set sells for such high prices today.

7. Many values of the so-called Tourist Issue were printed but not issued to the post offices or sold otherwise. We presume that they were destroyed in the flooding that occurred in Riyadh while these stamps were stored in the basement of the printing plant. I saw an entire wall stacked with full sheets of stamps that were solidly stuck together. All of these were later taken out and destroyed.

8. In 1975, we were told that the Ministry of Communications had been preparing about 300 first day covers for favored distribution within the Ministry and the Government for most new issues. However, none had been prepared at that time since 1972. The listing of FDCs in Random Notes No. 17 shows an official FDC for the World Telecommunications Day set of May 17, 1971, but not another such until the Faisal Issue of July 6, 1975. Can anyone add any information?

9. The King Faisal Issue was noteworthy for a number of reasons. This set marked the appearance of the first souvenir sheet since the Malaria Issue of May 7, 1962. The Faisal sheet was instantly popular with collectors, as was the set as a whole. The design is superbly simple and elegant, much in contrast to many Saudi commemoratives, which can be cluttered and over-detailed. The Saudis had previously announced that they would not use any human form on stamps, and the flap over the 100th Anniversary UPU set can be taken as an indication of their thinking. Therefore, it was quite a departure to return to the human form and to an actual likeness as well. Another unusual thing was that the three denominations were not printed in equal quantities. There were 1,500,000 of the 4pi, 1,000,000 of the 16pi, and 500,000 of the 23pi. Nevertheless, since the 4pi denomination was used for internal mail and for mail to Arab countries, this denomination may indeed be the hardest to find mint today.

10. I ran into Superior Stamp Co. at the recent show in Dallas, Texas, and asked them about the list of Saudi Arabian booklets they had advertised (at such high prices). They told me that they had sold out the entire offering at the advertised prices.

11. RN No. 7 contained remarks sent in by Carl Catherman concerning the occasional Hodeidah cancellations we find on stamps of the 1934 Heir Apparent issue, mainly the 1/2pi. Carl informed us that after the Saudi occupation of the Tihama, in the Yemen, the canceller was removed to Mekkah. Therefore, it is quite likely that most of the examples we see were cancelled there, well after the occupation period. The clerk in the Hodeidah Post Office during the occupation was an Egyptian who did in fact send home letters to his family and friends in Egypt with the Hodeidah cancels on Saudi stamps, and these covers will be rare if you ever find them. I have not seen one, and Mr. Catherman says that he does not have any in his collection. The various pictures of items from Baron Jakob von Uexkull's collection also do not show any such covers.

12. The Hejaz large three-line overprint, Scott L81-131, was printed from two plates. Establishment of the second plate rests on the discovery of one example on a Colonial Photo Stores cover. Most mint examples known so far occur on the 1/4pi green Coat of Arms and the 10pi bicolor from the same series, but a few examples are known of the 1pi blue and of this same stamp with the Caliphate overprint plus this three-line overprint. Unfortunately, the plates are not very different, and plating the individual example is usually the only way to make the distinction.

31 December 1983
Random Notes No. 26



Arabian Philatelic Association

c/o Aramco, Box 1929
Dhahran, Saudi Arabia

January 31, 1984

A RANDOMLY NOTED POST-SCRIPT:

(Added to RN No. 26)

Due to the delay in publishing these notes, we have a few items to be included in this mailing. I beg the Editor's indulgence, and will charge ahead.

13. Rudy Thoden notes that the Reference Manual of Saudi Arabian Forgeries - Part III - awaits qualified photographic assistance. We don't expect to see it before March, and it may be delayed even more.

14. The A.P.A. Board has approved in principle the establishment of an A.P.A. Expertizing Service for Saudi stamps. Regulations are being developed, and we will let you know of the results shortly.

15. Rudy Thoden spotted a new kind of forgery being offered by a New York dealer (not an A.P.A. member). These are fake double perforations on 1960-63 Cairo printing GOSP, Dam and Plane definitives. Beware!

16. Rudy also notes a host of new issues:

15 ha Khafji perf. 12	Sep 83
50 ha Khafji perf. 12	Oct 83
25 ha Khafji perf. 12	Dec 83
20 ha Al-Aqsa Mosque	Dec 83
10 ha Khafji perf. 12	Jan 84

All of the Khafji are in the small format. Also in December the new 20 ha FAO commemorative was issued. (Is this becoming an annual issue?) It's vertical, and looks quite different than the previous two.

17. Jim Kearney has kindly provided a list of the results from the November A.P.A. Auction. It is attached.

18. Rudy Thoden has updated his specialized listings of the 1976-82 definitives and the 1982-84 definitives. Both lists are attached.

19. Finally, we have an adlet -

WANTED --- SAUDI ARABIA

L78, L87d, L95a, L100a, L108a, L116a, L116b, L117a, L122a, L124,
L124a, L136a

WILL PAY DOUBLE SCOTT'S CATALOG FOR GENUINE PLATABLE COPIES MINT OR USED

R.J. Thoden, Aramco Box 1802, Dhahran, Saudi Arabia

SAUDI ARABIA IN THE 1984 SCOTT'S CATALOG

by R.J.Thoden

Prices

Prices for most Saudi stamps have stabilized recently after the large increases of the last few years. This is reflected in the Saudi Arabia listings in Scott's STANDARD POSTAGE STAMP CATALOG, volume 4, 1984 edition.

There is not a single change, up or down, in the Hejaz and Nejd listings. Most prices for the normal varieties do approximate their current value as shown by recent A.P.A. auction results. Many of the errors, however, are still underpriced. The prevalence of forgeries gives the impression of a larger supply of these errors than is really the case.

There are some changes in the listings after 1934. Most of these are considerable, and recognize prices that have been charged by dealers for some time. Other issues, however, are left unchanged at small fractions of today's dealer selling prices.

The Heir Apparent set (Scott's # 138-149) mint rises from \$2055 to \$2175, with the middle values increasing.

The Dammam Port souvenir sheets are now correctly priced at \$75 per set, rather than \$75 each, in the footnote following #240-242.

The watermarked Dam set (#431-441A) shows some large increases. The 6, 7 and 8p climb from \$1.25 each to \$4 each, the 9p from \$2 to \$4, the 11p is priced for the first time at \$15, and the 13p goes from \$6 to \$7. The rare 4p, which sold in the recent A.P.A. auction for SR 360 (\$ 100+), remains underpriced at \$15, however.

In the "Tourist" issues, the 50, 100, and 200p Prophet's Mosque (#484-486) increases from \$9/12.50/17.50 to \$10/20/30. These prices seem rather rich, considering these stamps were available at the post office 'till recently. The rare 3p Mecca Mosque (#489) goes from \$75 to \$125. The 2p and 7p Madayin Saleh, #528 and 533, rise from \$1.50 each to \$12 and \$20, respectively. The 4p "Yesterday and Today" (#431) goes from \$3 to \$5.

The 3rd Arab League Rover Moot set (#607-609) climbs from \$1.25 to \$7, still far below dealer quotes which go up to \$20.

The 20th anniversary of WHO (#613) goes from 50 cents to \$3. Most commemoratives from #624 to 644 at least double in catalog price. The 1974 U.P.U. set (#645 - 647), long underpriced, increases from \$24 to \$45, still under the usual selling price of \$55-\$60. The used set goes from \$3 to \$15.

The 1975 King Faisal souvenir sheet (#674) goes from \$250 to \$350.

The 1976 Saudi Television stamp (#688) remains at 50 cents, although the last Linn's Trends in late 1981 showed dealers were already charging \$8 for it.

The key value of the 1976-80 large Khafji definitives, the 55h. (#741) jumps from 75 cents to \$10 mint and 26 cents to 50 cents used. The scarce SR2 (#731) remains at \$2 although copies have sold recently at around \$10.

The 1979 stamp anniversary souvenir sheet (#778) is priced for the first time at \$75.

The 1980 International Year of the Child set (#786-787) stays at 70 cents. There is an ad in a January 1984 Linn's Weekly offering the set at only \$29.95! Both this price and the Scott's catalog price are unrealistic in the author's opinion.

The 50th anniversary SR10 souvenir sheet (#833) doubles from \$10 to \$20 mint, while the used price of \$5 is deleted.

New issues are priced at the usual rate of \$1 per SR1. Even these prices of about 3 1/2 times face (SR1 equals about 28 cents) are below the excessive prices being charged by most new issue dealers.

There were no changes at all in the airmails or postal tax stamps. In the postage dues, #J25-J27 goes from \$9 to \$12 and #J28-J30 from \$5 to \$8. In the officials, the 1961 set (#07-015) almost triples from \$18 to \$52. Used prices for #036-047 are deleted. These stamps are even scarcer in used condition than they are mint.

Listings

Each year, Scott's solicits suggestions from the A.P.A. on improving the Saudi Arabia listing. They even acknowledge the A.P.A. on page ii. Eleven pages of suggested revisions and additions were sent to them in April 1983. Unfortunately, not one of these suggestions was accepted for inclusion in the 1984 edition. Hopefully this is just a timing problem, and they will appear in 1985. Some of the suggestions, however, such as re-writes of the Hejaz "illegible" issues (#L135-L141 and LJ26-LJ34) and the "Tourist" issues (#458-597), (to list the original and redrawn frame issues separately), have been offered for several years now to Scott, with no action taken. Scott's listings of these issues are hopelessly inadequate in their present form, and collectors are advised to use the Stanley Gibbons listings, or the A.P.A. listings which were distributed with the "Random Notes".

In the 1984 Hejaz listings, four minor varieties were added: #L41b, L65b, L83d, and L106b. A footnote "double overprint is also found on Nos. L87-88, L94-95, L100 and L103-L105" was added after #L107. It is not known where Scott's got this information, as no such genuine double overprints are known to exist.

In the 1976-80 Khafji set, the 40h. error printed in the color of the 25h. was added as #738a, (unpriced). The "two-dots in Al-Khafji" varieties (#734a, 740b, 743a, 750a) that were added in the 1983 edition have been deleted, and are now covered in a footnote.

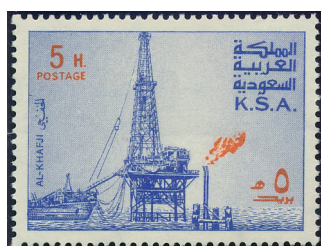
The four 1982 post-office souvenir sheets are not given a listing, just being mentioned in a footnote after #844. The 1983 King Fahd and Prince Abdullah souvenir sheets are not even mentioned at all. This is hardly consistent with the treatment given other recent souvenir sheets, which were allotted a catalog number of their own.

Scott has not yet discovered the small size Khafji and Ka'aba definitives which started appearing in 1982.

Arabian Philatelic Association
January 1984

SPECIALIZED LISTING OF 1976-82 SAUDI ARABIA DEFINITIVES

A. KHAFJI PLATFORM



	PAPER A				PAPER B		PAPER C			
	WM	WM	WM	WM	WM	WM	WM	WM	WM	WM
	U	D	R	L	U	D	U	D	R	L
5H. VIOLET BLUE & ORANGE ('76)	X	X	X	X			X	X		
A. MILKY BLUE & ORANGE ('80)	X									
B. DOUBLE PRINT OF ORANGE							X	X		
10H. YELLOW GREEN & ORANGE ('76)	X	X					X	X	X	X
A. IMPERF.							X	X		
15H. YELLOW BROWN & ORANGE ('77)	X	X					X	X		
A. IMPERF.								X		
20H. DARK GREEN & ORANGE ('77)	X	X					X	X	X	X
A. IMPERF.								X		
B. RETOUCHE PLATE ('81)							X		X	X
25H. PURPLE VIOLET & ORANGE ('77)	X	X			X	X	X	X		
A. IMPERF.								X		
B. PALE VIOLET & ORANGE ('81)								X		
C. RETOUCHE PLATE ('82)							X			
D. AS B. RETOUCHE PLATE ('82)							X			
30H. BLUE & ORANGE ('77)	X	X		X	X	X				
35H. GRAY BROWN & ORANGE ('78)	X	X					X	X		
A. IMPERF.	X									
40H. DARK RED LILAC & ORANGE ('77)	X	X			X	X	X	X		
A. PURPLE VIOLET & ORANGE ('80)		X								
45H. RED VIOLET & ORANGE ('77)	X	X			X	X	X	X		
A. IMPERF.							X			
50H. PALE RED & ORANGE ('77)	X	X					X	X		
A. ARABIC VALUE & FLAME OMITTED							X			
B. ORANGE & ORANGE ('77)	X									
C. PINK & ORANGE ('79)	X									
D. RETOUCHE PLATE ('81)							X	X	X	X
E. DOUBLE PRINT OF ORANGE								X		
55H. BLUISH GREEN & ORANGE ('77)					X	X				
65H. BROWN & ORANGE ('77)	X	X			X	X	X	X		
A. IMPERF.								X		
B. RETOUCHE PLATE ('81)							X		X	X
1R. GRAY & ORANGE ('77)	X	X			X	X	X	X		
A. IMPERF.								X		
B. RETOUCHE PLATE ('81)							X		X	X
2R. GRAY VIOLET & ORANGE ('80)	X	X								

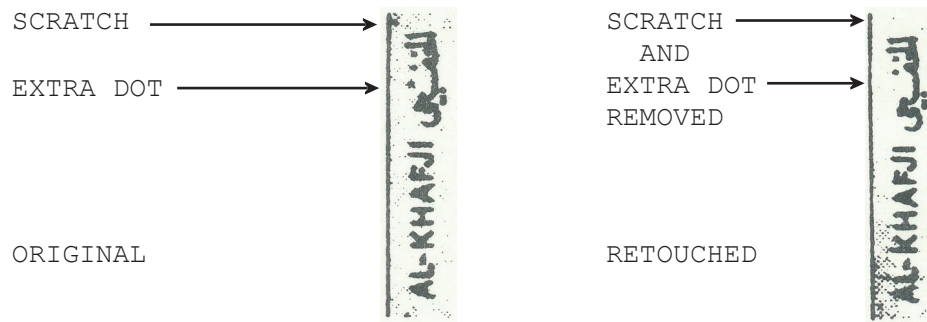
WATERMARKS

WATERMARK IS SCOTT'S TYPE 361. WM "U,D,R,L" REFERS TO THE ORIENTATION OF THE WATERMARK, UP, DOWN, RIGHT, LEFT AS SEEN FROM THE FRONT OF THE STAMP.

SHEET LAYOUT

ALL VALUES WERE PRINTED IN SHEETS OF 100 (10x10) WITH A VERTICAL GUTTER ONE STAMP WIDE BETWEEN THE 5TH AND 6TH COLUMNS. THE ORIGINAL PLATE HAD THE PRINTER'S INSCRIPTION UNDER THE 91ST AND 96TH STAMPS. UP TO LATE 1979, EACH SHEET HAD PLATE NUMBERS (WESTERN 1 AND 2) IN THE GUTTER BETWEEN THE 5TH AND 6TH STAMPS. LATER PRINTINGS, ALL ON PAPER C, HAVE NO PLATE NUMBERS.

IN 1981, THE PLATE WAS RETOUCHEDED. THIS IS MOST OBVIOUS IN THAT THE PRINTER'S INSCRIPTION WAS MOVED TO UNDER THE 95TH AND 100TH STAMPS. HOWEVER, TWO SMALL CHANGES WERE ALSO MADE TO EACH INDIVIDUAL CLICHE. A SMALL PROTRUSION FROM THE LEFT FRAME LINE JUST ABOVE THE ARABIC WORD "AL KHAFJI" WAS REMOVED, AND AN ERRONEOUS DOT IN THE ARABIC WORD "AL KHAFJI" WAS ALSO REMOVED. IN 1982, THE 20H. AND 65H. FROM THE RETOUCHEDED PLATE WERE PRINTED IN SHEETS OF 100 WITH NO GUTTERS.



THE 5H. WAS ALSO ISSUED IN SHEETS OF 50 (5x10) IN 1976 WITHOUT PRINTER'S INSCRIPTION OR PLATE NUMBER. IN THE INTERIOR OF THESE SHEETS, THE CENTER PERFORATION OF EACH BLOCK OF 4 IS MISSING. THE SIDEWAYS WATERMARK VARIETIES OF THE 5H. COME FROM THESE SHEETS OF 50. THE INITIAL ISSUE OF THE 1R. VALUE FROM THE RETOUCHEDED PLATE WAS ALSO IN SHEETS OF 50 (5x10) WITH SIDEWAYS WATERMARK. IN 1982, THE 25H. FROM BOTH THE ORIGINAL AND RETOUCHEDED PLATES WERE ISSUED IN SHEETS OF 50 (5x10). IN THE ORIGINAL, THE PLATE INSCRIPTION IS IN THE LOWER LEFT CORNER; IN THE RETOUCHEDED, IT IS IN THE LOWER RIGHT CORNER.

PAPER

SOME VALUES EXIST ON MORE THAN ONE KIND OF PAPER. PAPER A IS THICKER AND ROUGHER THAN PAPER B. PAPER B IS SLIGHTLY THINNER AND SMOOTHER THAN PAPER A AND THE DESIGN SHOWS THROUGH SLIGHTLY ON THE BACK. PAPER B WAS NOT USED AFTER 1977. THE 55H. VALUE WAS PRINTED ONLY ON PAPER B AND CAN THUS BE USED AS A BASIS FOR IDENTIFICATION OF THIS PAPER. BOTH PAPERS A AND B ARE LUMINESCENT UNDER ULTRA-VIOLET LIGHT. PAPER C RESEMBLES PAPER A UNDER ORDINARY LIGHT BUT IS DULL PURPLE BROWN (NON-LUMINESCENT) UNDER ULTRA-VIOLET LIGHT AND THE COLORS OF THE DESIGN ARE QUITE DIFFERENT UNDER THIS LIGHT. PAPER C WAS FIRST USED IN MID-1979 AND THEN FOR ALL LATER REPRINTINGS.

PAPERS A AND C INCLUDE A NUMBER OF SUB-TYPES WHICH VARY IN THE DEGREE OF LUMINESCENCE OR NON-LUMINESCENCE. THOSE WISHING TO SPECIALIZE TO A GREATER DEGREE ARE REFERRED TO THE RANDOM NOTES NO. 21 ATTACHMENT ON THIS SUBJECT.

COLOR ERRORS

THE 50H. IN ORANGE IS REPORTED TO BE THE RESULT OF AN ERROR, WHEN INK INTENDED FOR THE ORANGE NUMERALS WAS MIXED WITH THAT USED TO PRINT THE BASIC DESIGN. THIS OCCURRED DURING THE INITIAL PRINTING.

FIFTY COPIES OF THE 40H. PRINTED IN THE COLOR OF THE 25H. WERE REPORTED TO HAVE BEEN FOUND IN RIYADH.

SHADES

SHADES EXIST OF BOTH THE BASIC DESIGN COLOR AND THE ORANGE VALUE IMPRINT. MOST OF THESE ARE BELIEVED TO BE DUE TO VARIATIONS IN THE AMOUNT OF INK ON THE PLATE. WHERE A STAMP EXISTS ON BOTH PAPERS A AND B, THOSE ON PAPER A HAVE A MORE INTENSE COLOR. ONLY SHADES CONSIDERED BY THE EDITOR TO BE SIGNIFICANT HAVE BEEN INCLUDED IN THIS LISTING.

IMPERFORATES

ONE SHEET OF THE 35H. (PAPER A) COMPLETELY IMPERFORATE IS REPORTED TO HAVE BEEN FOUND IN RIYADH. THE ORIGIN OF THE OTHER IMPERFORATES IS UNKNOWN. THE VENDOR OF THESE IMPERFORATES CLAIMS ONLY ONE SHEET OF EACH IS KNOWN. MANY VALUES EXIST WITH IMPERFORATE TOP OR BOTTOM MARGIN, OR WITH DOUBLE OR TRIPLE PERFORATIONS IN THE TOP OR BOTTOM ROW OF THE SHEET.

PLATE VARIETIES

THE SAME BASIC DESIGN PLATE HAS BEEN USED FOR ALL VALUES. AS MENTIONED ABOVE, IT WAS RETOUCHEDED IN 1981.

POSITION 97 OF THE FIRST PRINTINGS OF THE 30H., 40H. AND 45H. VALUES (ON PAPER B) HAD A LARGE DOT OVER THE ARABIC INSCRIPTION AT TOP RIGHT. THIS DOT WAS RETOUCHEDED ON THE 25H. (ON PAPER B), BUT IS STILL VISIBLE. LATER PRINTINGS OF THE 25H., 30H., 40H. AND 45H. (ON PAPER A) SHOW THE DOT COMPLETELY GONE.

SEVERAL VARIETIES EXIST ON THE DENOMINATION PLATE OF THE 50H. VALUE OF THE ORIGINAL PRINTING. POSITION 22 HAS A LARGE DOT BELOW THE FLARE. POSITION 45 HAS A BROKEN ARABIC "5". POSITIONS 44 AND 49 HAVE A SHORT TAIL ON THE ARABIC "HAA" OF "HALALAH". THIS WAS NOTICED ALMOST IMMEDIATELY AND A CRUDE TAIL WAS ADDED BY RETOUCHING. POSITION 84 HAS A SHORT "P" IN THE ENGLISH "POSTAGE". ALL THESE VARIETIES WERE CORRECTED IN A 1979 PRINTING.

POSITION 13 OF THE 35H. VALUE HAS A SHORT "P" IN THE ENGLISH "POSTAGE". THIS WAS CORRECTED IN A 1979 PRINTING.

PRINTINGS OF THE 35H., 50H., 65H. AND 1R. VALUES OF UNKNOWN DATE SHOW TWO VARIETIES: POSITION 7 HAS A DOT IN THE TOP FRAME LINE, AND POSITION 95 HAS A DOT LEFT OF THE FLARE PIPE.

LATE 1979 PRINTINGS OF THE 65H. AND 1R. VALUES (ON PAPER C) HAD A LARGE DOT UNDER THE "K" OF "K.S.A." IN POSITION 10. THIS WAS QUICKLY REMOVED.

B. HOLY KA'ABA

ORIGINAL
TYPE



REDRAWN
TYPE

	PAPER A				PAPER B		PAPER C			
	WM	WM	WM	WM	WM	WM	WM	WM	WM	WM
<u>ORIGINAL TYPE</u>	U	D	R	L	U	D	U	D	R	L
15H. SALMON & BLACK ('76)					X	X				
20H. LIGHT BLUE & BLACK ('77)	X	X								
40H. LIGHT GREEN & BLACK ('77)					X	X				
<u>REDRAWN TYPE</u>										
5H. VIOLET & BLACK ('78)	X	X					X	X		
10H. PALE VIO. BLUE & BLK. ('78)	X	X					X	X		
A. IMPERF.							X			
15H ORANGE & BLACK ('78)	X	X					X	X	X	X
A. IMPERF.							X			
20H. LIGHT BLUE & BLACK ('79)	X	X					X	X		
A. IMPERF.							X			
B. BLUISH GREEN & BLACK ('80)							X	X		
C. AS B, IMPERF.							X			
25H. YELLOW & BLACK ('78)	X	X					X			
A. IMPERF.									X	
B. FLUORESCES ORANGE ('79)							X	X		
30H. GRAY GREEN & BLACK ('78)	X	X					X	X		
A. IMPERF.								X		
35H. PALE BROWN & BLACK ('78)	X	X					X	X		
A. IMPERF.								X		
40H. YELLOW GREEN & BLACK ('78)	X	X								
A. IMPERF.				X						
B. FLUORESCES YELLOW ('79)							X	X		
C. AS B, IMPERF.								X		
45H. VIOLET BROWN & BLACK ('78)	X	X					X		X	X
50H. PINK & BLACK ('78)	X	X					X	X		
A. IMPERF.							X	X		
65H. BLUE & BLACK ('79)	X	X					X	X		
A. IMPERF.							X			
B. BLUE ALMOST OMITTED				X						
1R. OLIVE & BLACK ('78)	X	X								
A. FLUORESCES YELLOW ('80)							X	X	X	X
B. AS A, IMPERF.							X			
2R. BLUISH GREEN & BLACK ('79)	X	X								

WATERMARKS

SEE KHAFJI PLATFORM.

ORIGINAL & REDRAWN

THE REDRAWN TYPE HAS THE CENTRAL DESIGN VERY SLIGHTLY LARGER AND STRENGTHENED TO MAKE IT DARKER AND CLEARER. THE DIFFERENCE IS MOST NOTICEABLE IN THE TWO MINARETS. THERE ARE ALSO SMALL DIFFERENCES IN THE RELATIVE POSITIONS OF THE WESTERN AND ARABIC NUMERALS AND "H".

SHEET LAYOUT

ALL VALUES WERE PRINTED IN SHEETS OF 100 (10x10) WITH A VERTICAL GUTTER BETWEEN THE 5TH AND 6TH COLUMNS. PRINTER'S INSCRIPTION UNDER THE 91ST AND 96TH STAMPS. NO PLATE NUMBERS.

THE 45H. WITH SIDEWAYS WATERMARK WAS ISSUED IN 1982 IN SHEETS OF 50 (5x10) ONLY. PRINTER'S INSCRIPTION AT LOWER LEFT.

PAPER

SEE KHAFJI PLATFORM.

SHADES

MANY SHADES EXIST. MOST OF THESE ARE BELIEVED TO BE DUE TO VARIATIONS IN THE AMOUNT OF INK ON THE PLATE, RATHER THAN TO DIFFERENT INKS BEING USED. THE 65H. LISTED ABOVE WITH "BLUE ALMOST OMITTED" APPEARS TO HAVE BLACK PRINTING ONLY, BUT A VERY FAINT BLUE IMPRESSION CAN BE SEEN UNDER A MAGNIFIER.

IMPERFORATES

SIX SHEETS OF IMPERFORATE 40H. STAMPS (ON PAPER A) WERE PURCHASED BY THE A.P.A. NEW ISSUE SERVICE FROM THE POST OFFICE AND DISTRIBUTED TO SUBSCRIBERS. THE ORIGIN OF THE OTHER IMPERFORATES IS UNKNOWN. THE VENDOR OF THESE IMPERFORATES CLAIMS THAT ONLY ONE SHEET OF EACH EXISTS.

MANY VALUES EXIST WITH IMPERFORATE TOP OR BOTTOM MARGIN OR WITH DOUBLE OR TRIPLE PERFORATIONS IN THE TOP OR BOTTOM ROW OF THE SHEET.

PLATE VARIETIES

THE REDRAWN 15H. HAS THREE CONSTANT VARIETIES. ON STAMP 47, THERE ARE 3 DOTS INSTEAD OF 2 ABOVE THE TAA MARBUTAH OF MAMLAKAH. ON STAMP 50, THERE ARE 3 DOTS INSTEAD OF 2 ABOVE THE TAA MARBUTAH OF HUKUMAH. ON STAMP 65, THERE IS A COMMA BETWEEN THE WESTERN "1" AND "5". ALL THESE WERE CORRECTED IN A 1980 PRINTING (ON PAPER C).

C. QUBA MOSQUE



	PAPER A				PAPER B		PAPER C			
	WM	WM	WM	WM	WM	WM	WM	WM	WM	WM
	U	D	R	L	U	D	U	D	R	L
20H. ORANGE & GRAY ('76)	X	X	X	X						
A. RED ORANGE & GREENISH GRAY ('78)	X	X								
50H. GREEN & VIOLET ('76)	X	X	X	*						
A. IMPERF.	X	X								
B. BRIGHT GREEN & REDDISH VIOLET ('78)	X	X								

* = REPORTED, NOT SEEN BY AUTHOR.

WATERMARKS

SEE KHAFJ1 PLATFORM.

SHEET LAYOUT

BOTH VALUES WERE PRINTED IN SHEETS OF 100 (10x10) WITH A VERTICAL GUTTER BETWEEN THE 5TH AND 6TH COLUMNS. PRINTER'S INSCRIPTION UNDER THE 91ST AND 96TH STAMPS. PLATE NUMBERS (ARABIC 1 AND 2) IN THE GUTTER BETWEEN THE 5TH AND 6TH STAMPS. THE 1978 PRINTINGS HAVE NO PLATE NUMBERS. THE 50H. WAS ALSO ISSUED IN SHEETS OF 50 (5x10) WITH PRINTER'S INSCRIPTIONS AND PLATE NUMBERS. IN THE INTERIOR OF THESE SHEETS, THE CENTER PERFORATION OF EACH BLOCK OF FOUR IS MISSING.

SHADES

THE COLORS OF THE 1978 REPRINTS VARY FROM LIGHT TO DARK. THIS IS BELIEVED TO BE DUE TO VARIATIONS IN THE AMOUNT OF INK ON THE PLATE, RATHER THAN TO DIFFERENT INKS BEING USED.

IMPERFORATES

ONLY ONE USED PAIR (WITH A BLURRED CANCEL, POSSIBLY OF DAMMAM) IS KNOWN THUS FAR OF THE 50H. IMPERFORATE, WMK DOWN. A SHEET OF 50 OF THE 50H. IMPERFORATE, WMK UP, WAS SOLD IN THE DAVID FELDMAN AUCTION OF APRIL 10-15. 1983. THIS SHEET WAS IN GENERALLY POOR CONDITION.

 READERS WHO HAVE OTHER VARIETIES ARE INVITED TO REPORT THEM TO THE AUTHOR SO THEY MAY BE INCLUDED IN THE NEXT EDITION OF THIS LISTING.

R. J. THODEN, ARABIAN PHILATELIC ASSOCIATION. REVISED NOVEMBER 1983. PUBLICATION ELSEWHERE WITHOUT PERMISSION IS PROHIBITED.

SPECIALIZED LISTING OF 1982-84 SAUDI ARABIAN DEFINITIVES

A. KHAFJI PLATFORM



	PF 14x13-1/2				PF 13-1/2		PF 12	
	WM	WM	WM	WM	WM	WM	WM	WM
	U	D	R	L	U	D	U	D
5H. VIOLET BLUE & ORANGE ('82)			X	X	X	X		
10H. YELLOW GREEN & ORANGE ('82)			*	X	X	X	X	
15H. YELLOW BROWN & ORANGE ('83)			X	X	X	X	X	
20H. DARK GREEN & ORANGE ('82)			X	X	X	X	X	
25H. PURPLE VIOLET & ORANGE ('83)								X
50H. PALE RED & ORANGE ('82)			X	X	X	X	X	
65H. BROWN & ORANGE ('82)	X		X	X	X	X	X	
1R. GRAY & ORANGE ('82)			X	X	X	X	X	

* = REPORTED, NOT SEEN BY AUTHOR

WATERMARKS

WATERMARK IS SCOTT'S TYPE 361. WM "U,D,R,L" REFERS TO THE ORIENTATION OF THE WATERMARK, UP, DOWN, RIGHT OR LEFT, AS SEEN FROM THE FRONT OF THE STAMP.

PERFORATIONS

PERF. 14x13-1/2 STAMPS CAN BE DISTINGUISHED FROM PERF. 13-1/2 IN THAT THOSE PERF. 14x13-1/2 HAVE EVEN PERFORATIONS AT ALL CORNERS WHILE THOSE PERF. 13-1/2 DO NOT. THIS CAN BE MOST CLEARLY SEEN IN A BLOCK OF 4.

STAMPS PERF. 14x13-1/2 AND 13-1/2 WERE ISSUED AS SHOWN ABOVE. ALL PERF. 12 STAMPS WERE ISSUED IN 1983, EXCEPT THE 10H. WHICH APPEARED IN 1984.

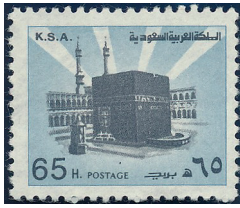
SHEET LAYOUT

PERF. 14x13-1/2 AND PERF. 13-1/2 STAMPS WERE PRINTED IN SHEETS OF 150 (10x15) WITHOUT GUTTERS. THERE ARE VARIATIONS IN THE PRINTER'S INSCRIPTION IN THE LOWER RIGHT CORNER OF THE SHEET. THE FOLLOWING HAVE BEEN SEEN BY THE AUTHOR:

- A- SHORT (24MM) UNDER STAMPS 149/150: 5H, 20H, 65H.
- B- SHORT (24MM) UNDER STAMP 150: 10H, 15H, 20H, 50H, 65H, 1R.
- C- LONG (29MM) UNDER STAMPS 149/150: 20H, 1R.

PERF. 12 STAMPS WERE PRINTED IN SHEETS OF 105 (7x15) WITHOUT GUTTERS. PRINTER'S INSCRIPTION (24MM) IN THE LOWER RIGHT CORNER.

B. HOLY KA'ABA



	PF 14x13-1/2				PF 13-1/2		PF 12	
	WM	WM	WM	WM	WM	WM	WM	WM
	U	D	R	L	U	D	U	D
10H. GRAY BLUE & BLACK ('83)			X	X				
20H. LIGHT BLUE & BLACK ('82)			X	X	X	X		
50H. PINK & BLACK ('83)			X	X	X	X		
65H. BLUE & BLACK ('82)			X	X	X	X		
1R. OLIVE & BLACK ('82)			X	X	X	X	X	

WATERMARKS

SEE KHAFJI PLATFORM.

PERFORATIONS

SEE KHAFJI PLATFORM.

SHEET LAYOUT

PERF. 14x13-1/2 AND PERF. 13-1/2 STAMPS WERE PRINTED IN SHEETS OF 150 (10x15) WITHOUT GUTTERS. THERE ARE VARIATIONS IN THE PRINTER'S INSCRIPTION (24MM). THE AUTHOR HAS SEEN THE FOLLOWING:

- A- UNDER STAMPS 149/150 (LR CORNER): 10H, 50H, 65H, 1R.
- B- UNDER STAMP 150 (LR CORNER): 20H, 65H.
- C- UNDER STAMP 141 (LL CORNER): 20H.

PERF. 12 STAMPS WERE PRINTED TN SHEETS OF 105 (7x15) WITHOUT GUTTERS. PRINTER'S INSCRIPTION (18MM) IN THE LOWER LEFT CORNER.

.....
 READERS WHO HAVE OTHER VARIETIES ARE INVITED TO REPORT THEM TO THE AUTHOR SO THEY MAY BE INCLUDED IN THE NEXT EDITION OF THIS LISTING.

R. J. THODEN, ARABIAN PHILATELIC ASSOCIATION. JANUARY 1984. PUBLICATION ELSEWHERE WITHOUT PERMISSION IS PROHIBITED.