

A Philatamix

A Philatelic Assortment

April 12th, 2025

Martin Lovegrove

Al Sadu Sheet

Perforation variations



No extensions to vertical perforations

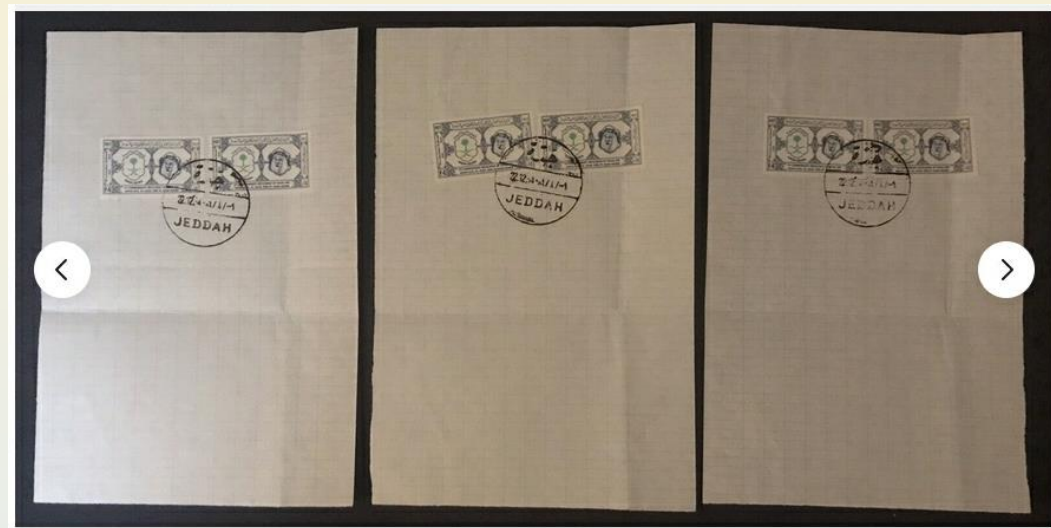
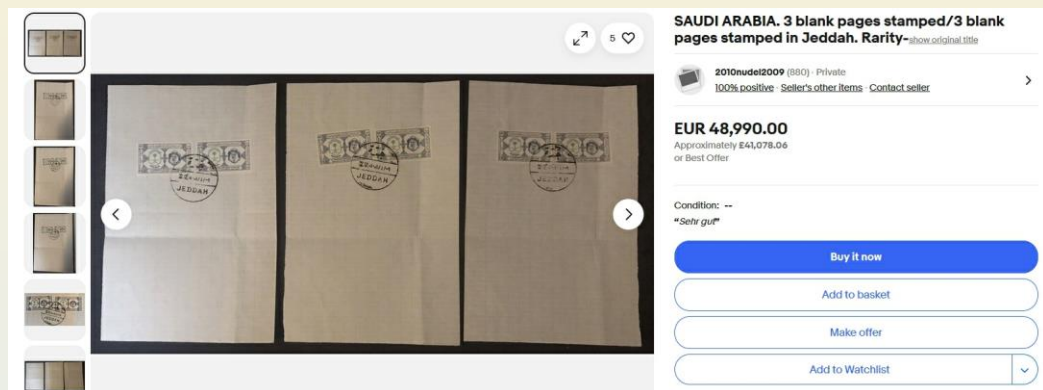


Single perforation hole extensions to vertical perforations in upper margin

I have not seen an issue with more than one perforation type since the 2020 - First Global Conference for Giftedness. Perhaps someone can extend my knowledge.

Expensive eBay item

SAUDI ARABIA. 3 blank pages stamped in Jeddah. Rarity.



EUR 44,990 for six Faisal installation stamps,
three having a vertical fold!

Postmark Variety



Type SM10L JEDDAH A.P. 16-1-1980. The month is an inverted Eastern Arabic numeral, the remaining numbers are Western Arabic.

Postmark Information Required



The full office name in the lower segment is required for the rewrite of Ken Knight's postmark articles. Note that it may not be a direct translation of the Arabic.

Postage Due Cover

This cover appeared in Cedarstamps auction 34 (19 November 2022).

Lot 341: Saudi Arabia, incoming under-franked air mail cover from Switzerland sent to Yambu via Jedda (5/7/1398 or 10/6/1978). Swiss fractional T seal applied to define the amount of taxation to be applied on arrival. It was calculated in 6 Piastres, paid through two tax due stamps of 2 and 4 Piastres (SG n D450 and D451) applied on the back. Both were canceled with red pen strokes and the 4 Piastre stamp also partially with the arrival cancellation of Jambu affixed on 5/7/1398 (14/6/1978). Ex Peter Smith collection, RPSL photocertificate. EXTREMELY RARE UNDER-FRANKED ENVELOPE TAXED IN SAUDI ARABIA ENRICHED BY LATE USE OF THE TAX DUE STAMPS

Starting price EUR 900. Unsold.

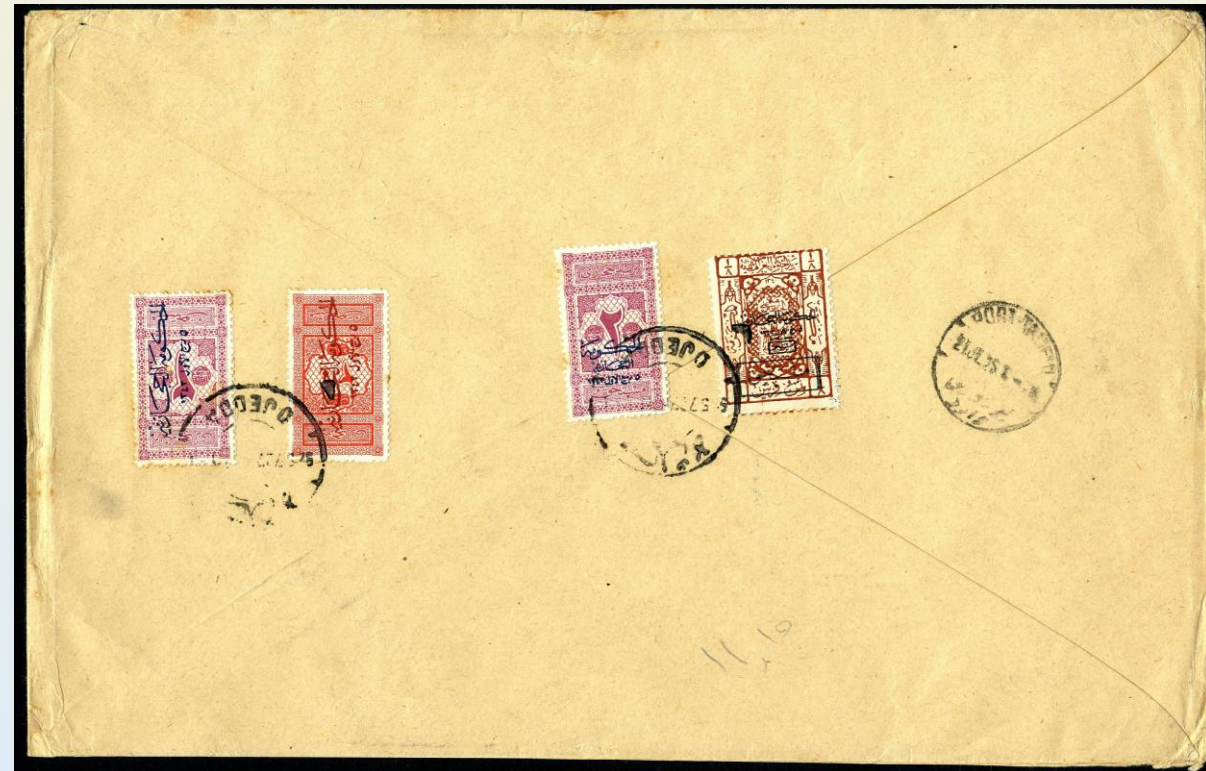
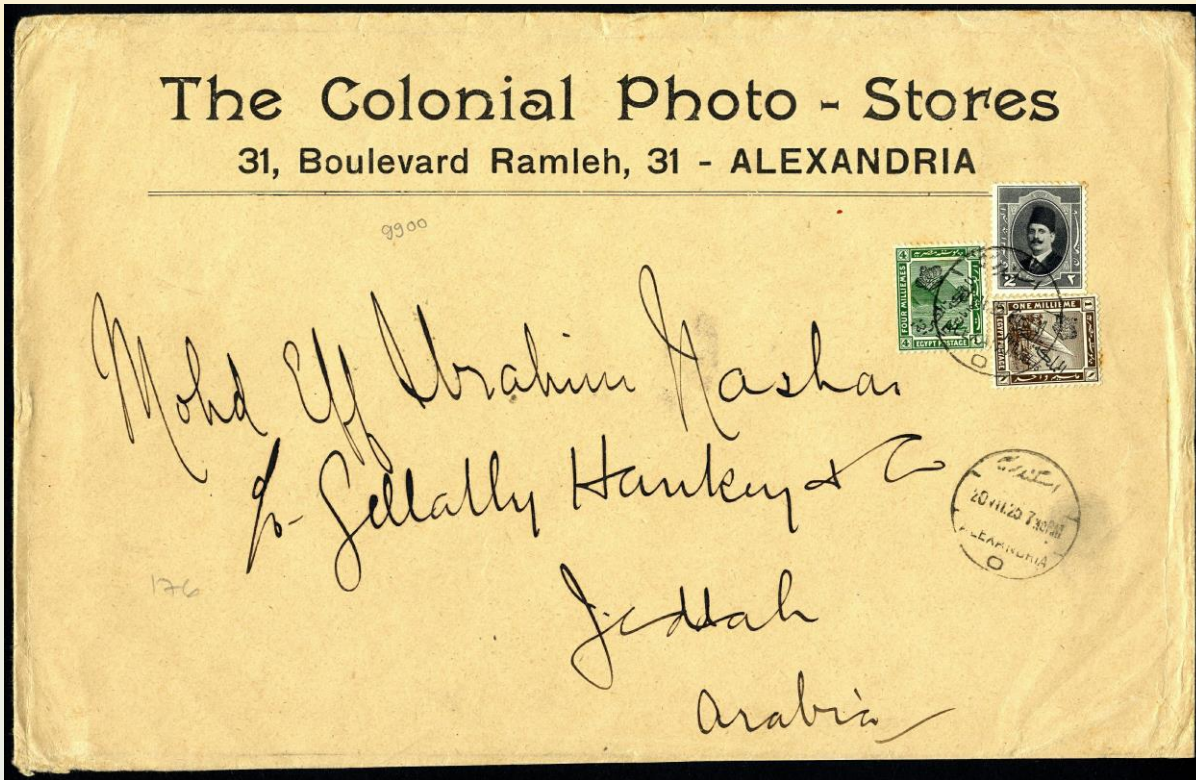
It also appeared in auction 40 (12 April 2025) as lot 269 with the same starting price and remained unsold.



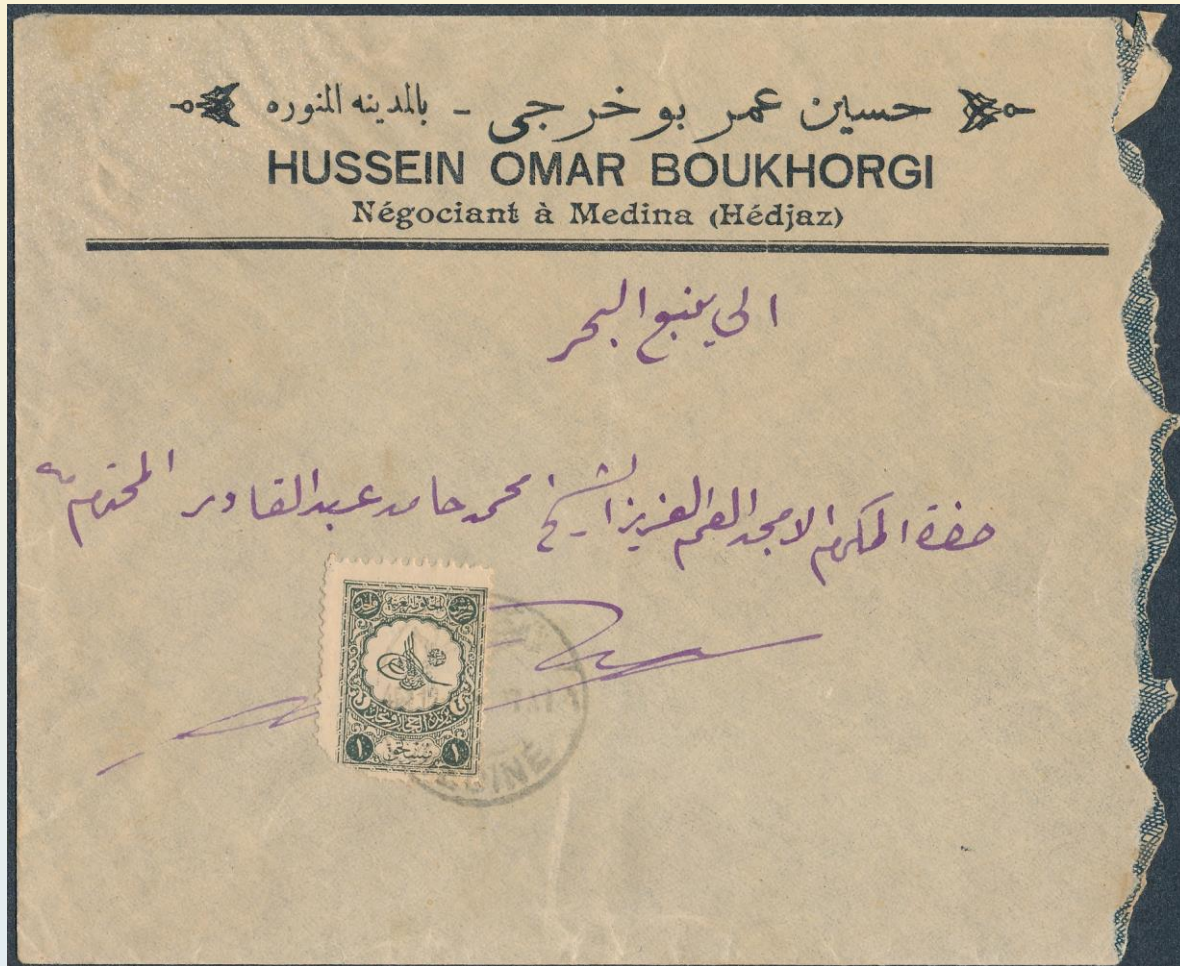
Postage Due Cover

This cover was seen in the Al Thani collection.

Sent from ALEXANDRIA on 20 July 1925, transit PORT
TAUFIQ 21 July 1925 and arrived DJEDDAH 27 July 1925.
There was no indication of under-payment, yet an array of
varied postage due stamps were applied and cancelled in
Jeddah.
There were other similar covers in the collection, and it is
almost certain that they were all philatelic.



Postage Due Cover (Stamp used for postage)



Medina to Yambo 4 December 1933, cancelled MEDINÉ (probably number 4), type H10.

Gibbons Stamp Monthly 2/1934: The Ministry of Finance has authorized the local postmasters to use the 1927 Postage Dues as 1/2 qirsh postage stamps when same are not available.

A Postage Due stamp so used is reported seen on a cover from Mecca, postmarked 18 December 1933. (RN17.1 item 3).

I have two other such covers:

25 October 1933, Jeddah to Yambo, with one 1 qirsh.

12 November 1933, Makkah to Jeddah, with four 1 qirsh.

Postage Due Cover
(Stamps used for postage)



Makkah to Jeddah. MECQUE 3, 12 November 1933 (24-7-1352) type X10
DJEDDAH arrival unclear.

Postage Due Cover (Stamps used for postage)



Typical philatelic cover of the period from Jeddah.
DJEDDAH 23, 22 December 1941 (3-12-1360) type S30 early state (date shown as 30-12-41)

Postage Due Cover (Philatelic creation?)

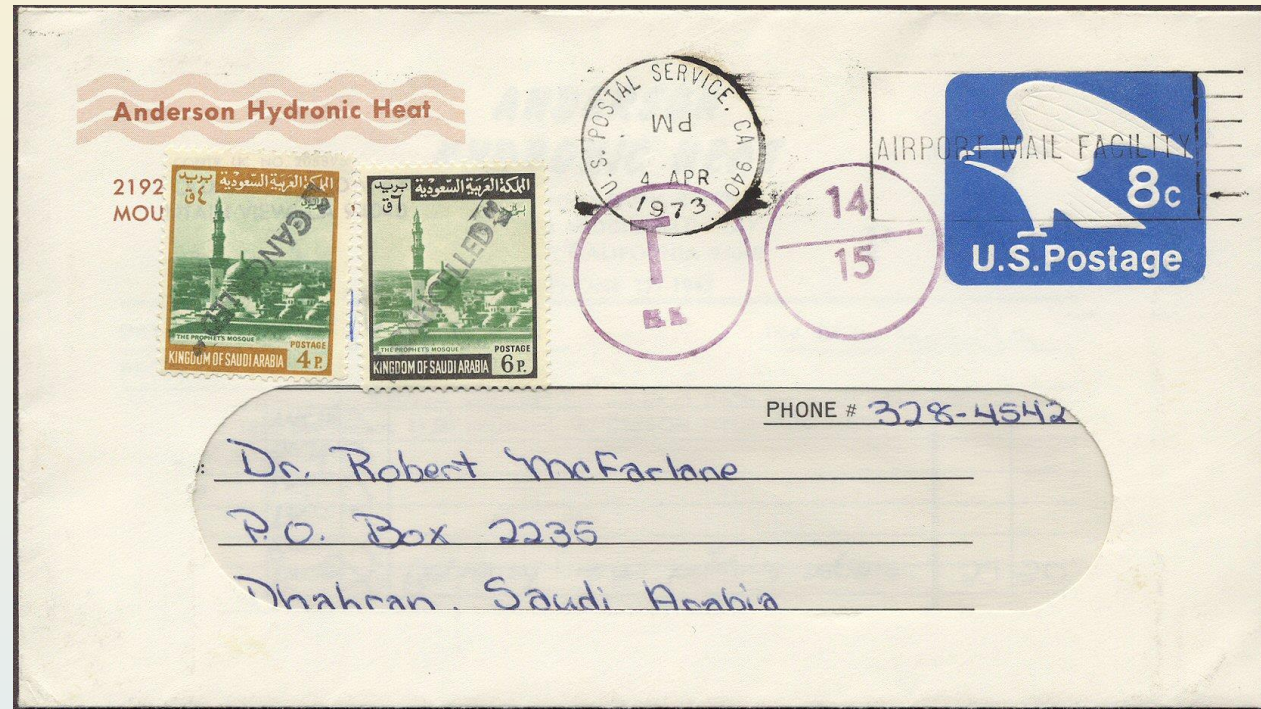
100 qirsh added as postage due stamp but not tied to cover. Rather excessive rate!



Under-paid cover from Iran to Dhahran via Jeddah.
TEHERAN July 1960, DJEDDAH 9-2-1380 (3 August 1960) type S70.

Postage Due Cover (Philatelic creation?)

Marked as postage due in USA and 'Tourist' stamps added and CANCELLED.

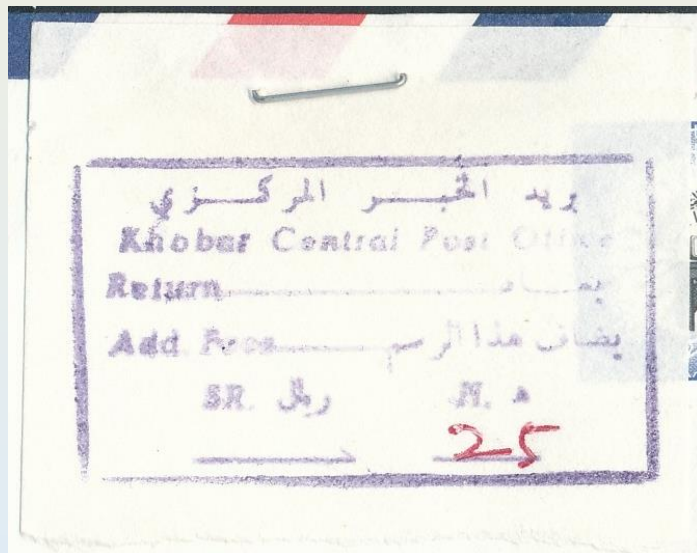


Similar covers exist but with DGA stamps and posting dates in the 1973-1974 period.
The addressee, Dr Robert McFarlane, was a member of the APA.

Postage Due Cover (Genuine!)



This cover was posted in Al Khobar but under-paid. It received a postage due label, attached by staple, and was received in Riyadh on 3 October 1989.



Left - Postage due label indicating that 25 Halalahs were due. There is no evidence to suggest that the fee was collected.

1928 1 qirsh Surcharge on 20 paras Turkish Pictorial Type

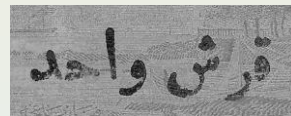
This stamp was the subject of an article by David Graham in Random Notes #34. Some have the error of an incorrect Arabic *sheen*, not mentioned by David. The *sheen* should have the isolated form and not the final form. The following stamps are from my own collection.

ش Isolated form.

ش Final form.



Incorrect final form of *sheen* on both stamps.



Correct isolated form of *sheen* on both stamps.



Arabic *waw* and *alef* transposed. Note that this also has the incorrect *sheen*.



Arabic *khah* instead of *hah*

Another error, *jeem* instead of *hah*, was illustrated in Random Notes #34.12.

Instructional Marking – Failed Delivery

This instructional mark is one of many used to denote the reason and action to be taken for a failed delivery. Instructional marks were introduced to Random Notes by Yusuf Aidroos in Random Notes #43 in his article ‘Saudi Sidelines’.



The mis-spelling of **unknown** is not unusual for these marks, but it is better than my Arabic!

Instructional Marking – Failed Delivery

These two covers have the 'unknown' instructional mark and are both addressed to the same person.



From England 23 June 2020.



From Australia 24 September 2020.

This 'Show & Tell' will be published on the APAI website. If answers to members' questions are received, they will be added to the relevant page.

The website URL is shown on page 2 of Random Notes