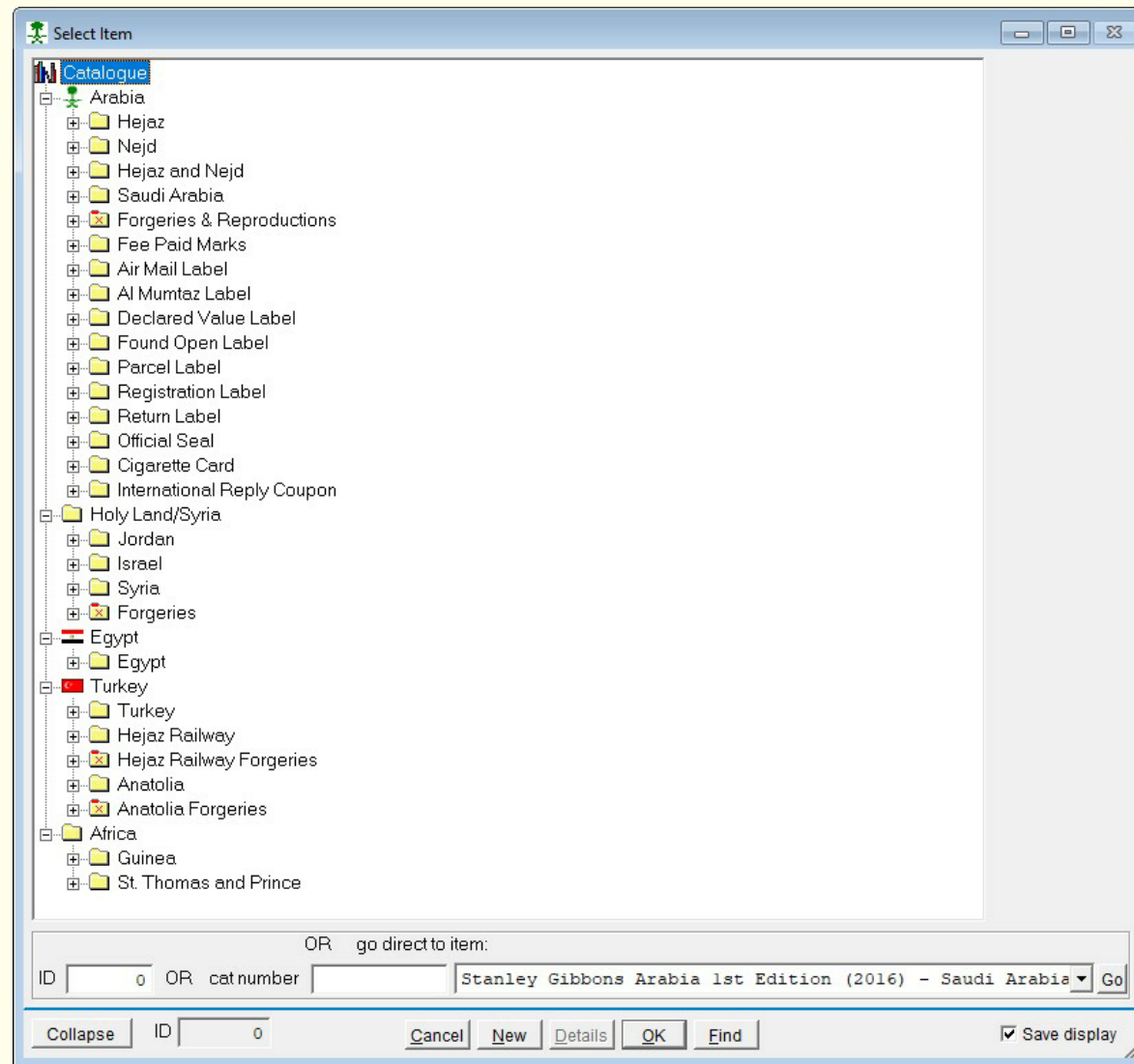
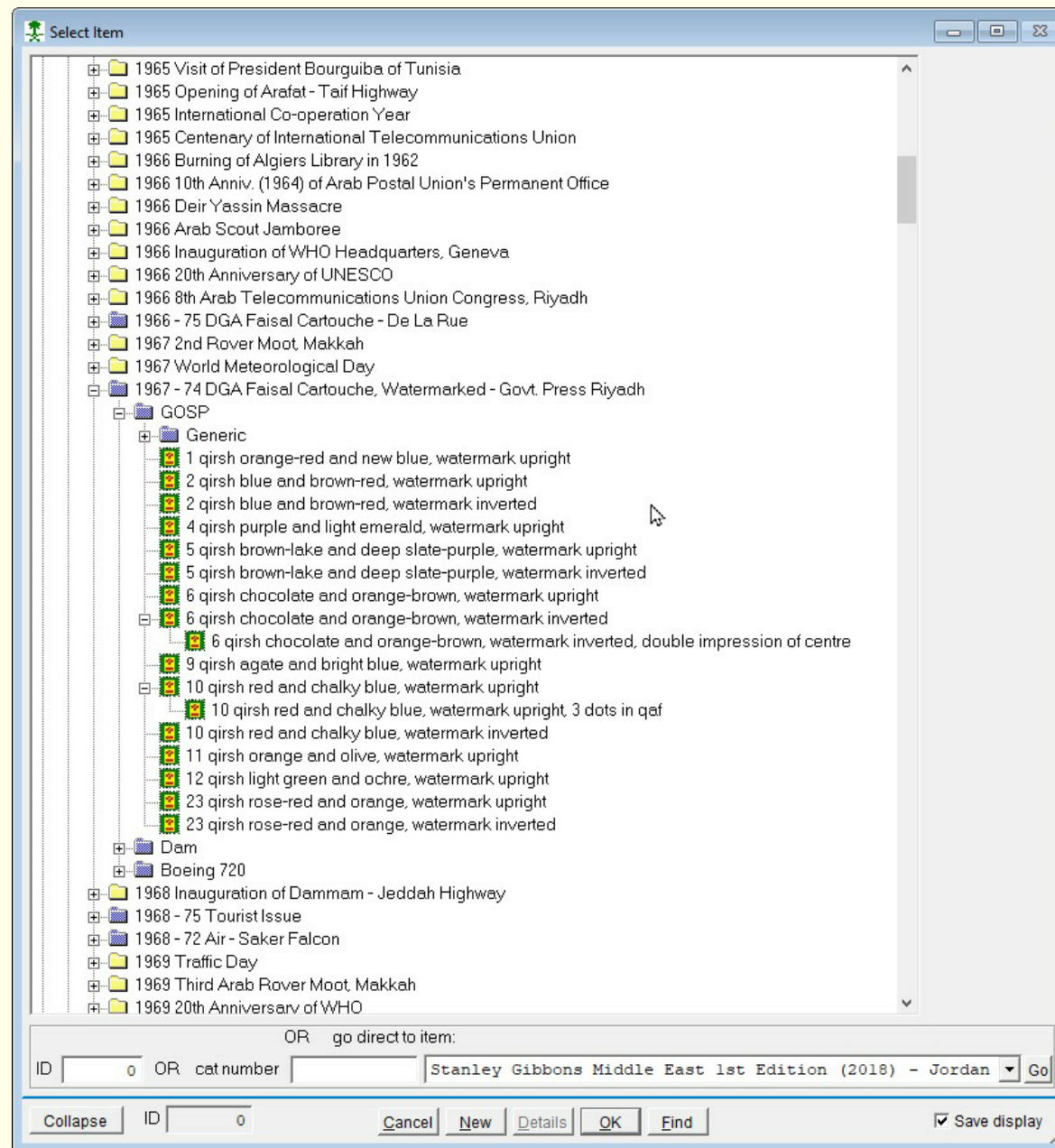


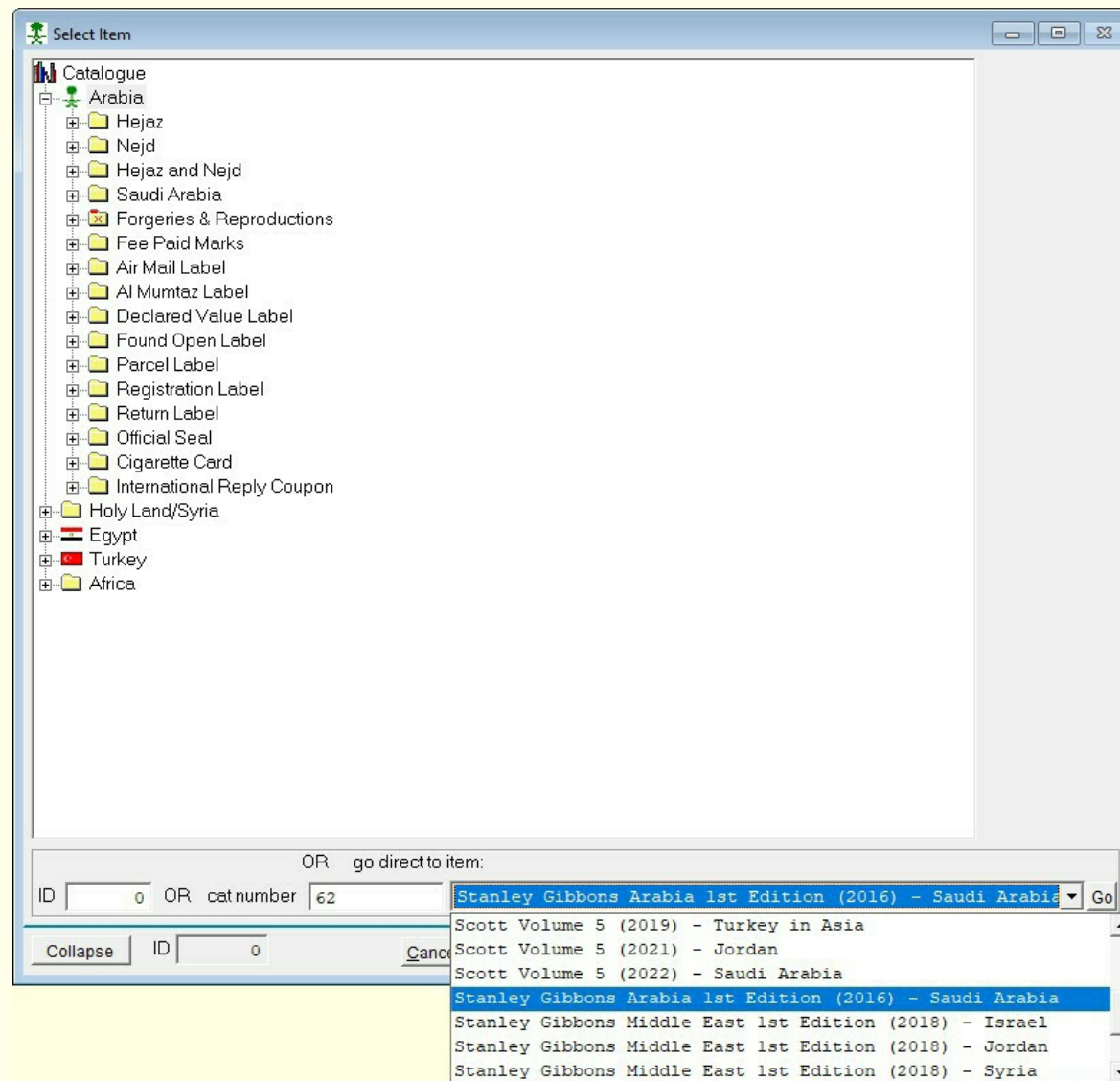
Digital Catalogue - Saudi Arabia and Beyond



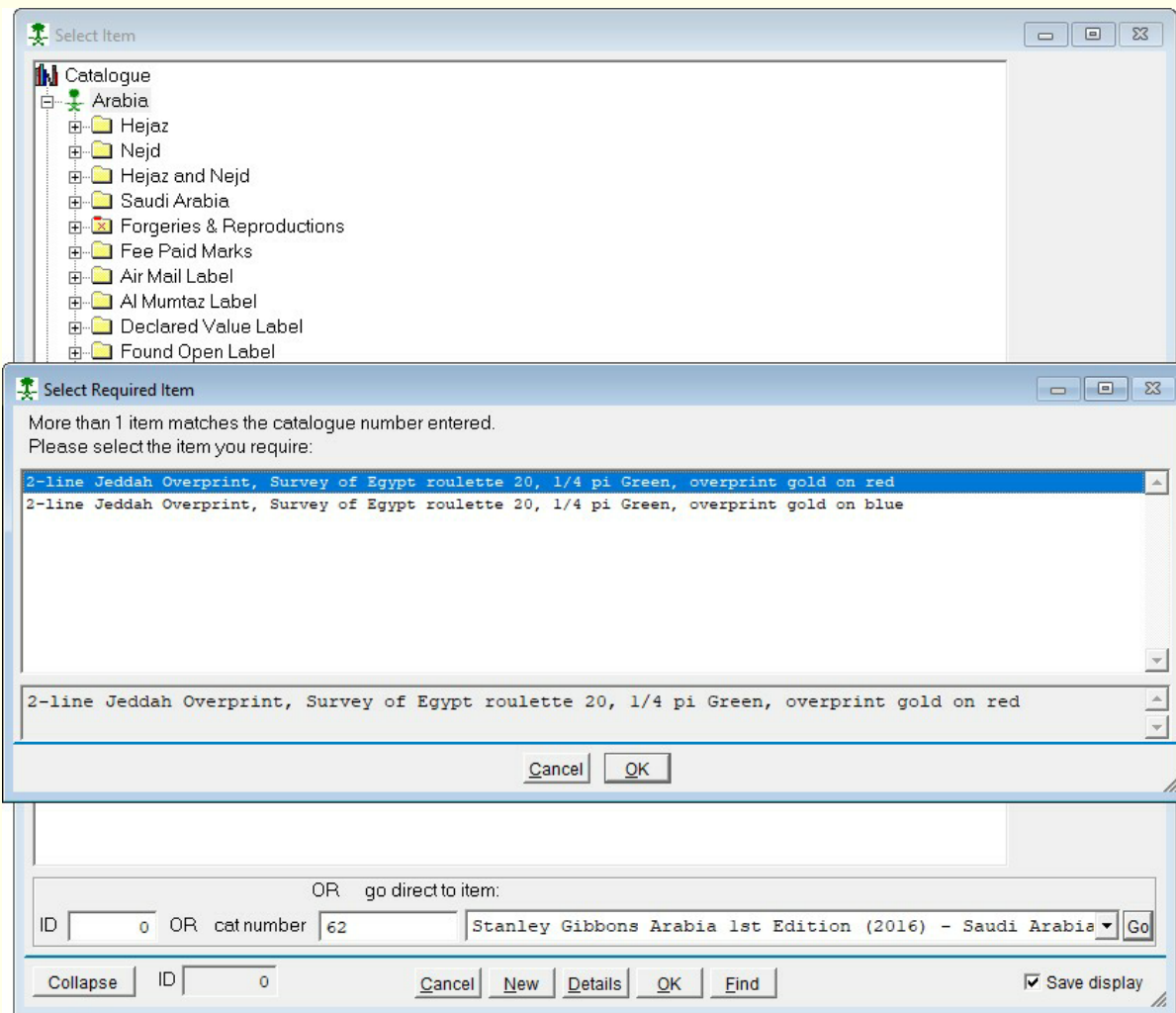
The catalogue was designed to work with a collection management system I was developing. It was originally for Hejaz, Nejd, Hejaz and Nejd, and Saudi Arabia, but has increased its scope over time.



The display is a 'tree' view, enabling the user to be able to drill down through levels of detail. Note the use of a 'Generic' group; this part only includes stamp details that can be determined for stamps on cover or document. It would not include watermark. This group is essential for a collection management system.



Instead of drilling down to a particular stamp, there is a facility to go directly to an item using a published catalogue number. As we will see later, several catalogues are used. In this example, I want to see SG 62, the Hejaz 1925 roulette 20 with two-line overprint in gold. So I enter the SG number, select the catalogue name and click 'Go'



Now we come to the specialist bit. The advantage of writing your own software is that you can do what you like. There are actually two stamps that are covered by SG 62, one with a gold on red overprint and one with gold on blue. In this case, I will be choosing gold on red.

Maintenance Mode

The screenshot shows the 'Collectable Item Maintenance' window with the following details:

- Item:** 1/4 pi Green, overprint gold on red (ID: 527, WNS:)
- Short desc:** 1/4 pi Green, overprint gold on red (Face value: 0.2500, qirsh)
- Tabs:** General (white), Source (green), Catalogue items (green), Children (green), Overprints (green), Notes (white), Printed Part (white), Flags + Attr (white), Status (green), Images (green), RN (white), Design (green)
- Set:** 2-line Jeddah Overprint, Survey of Egypt roulette 20
- Spec:** Specialized
- Based on:** 1/4 qirsh green (275)
- Variety of:** Roulette 20
- Item type:** Stamp
- Wmk type:** (empty)
- Wmk orient:** (empty)
- Perforation:** Rouletted 20
- Paper:** <undefined>
- Gum:** <undefined>

A list of overprint options is shown on the left, including:

- 1/8 pi Yellow, overprint red
- 1/8 pi Yellow, red overprint inverted
- 1/8 pi Yellow, red overprint on both sides
- 1/8 pi Yellow, red inverted overprints on both sides
- 1/8 pi Yellow, red overprint on front, double on back
- 1/4 pi Green, overprint red
- 1/4 pi Green, overprint red, offset of overprint on back
- 1/4 pi Green, red overprint inverted
- 1/4 pi Green, red overprint double
- 1/4 pi Green, red overprint double, one inverted
- 1/4 pi Green, overprint blue
- 1/4 pi Green, blue overprint inverted
- 1/4 pi Green, blue overprint on both sides
- 1/4 pi Green, overprint gold on red
- 1/4 pi Green, overprint gold on blue
- 1/2 pi Scarlet, overprint red

Buttons at the bottom include: Cancel, Delete, Save, Quit.

The next few pages show the catalogue in the maintenance mode.

This is where the details are added to the database. There are twelve sections, General, Source etc. There is always information in the General section any other sections containing information have green tabs.

Collectable Item Maintenance

Item: 1/4 pi Green, overprint gold on red ID: 527 WNS:

<F2> = 'multicoloured'

Short desc: 1/4 pi Green, overprint gold on red Face value: 0.2500 qirsh

General Source Catalogue items Children Overprints Notes Printed Part Flags + Attr Status Images RN Design

Catalogue	Equivalence	Cat. number	Cat No. for Value	Factor
Stanley Gibbons Arabia 1st Edition (2016) - Saudi Arabia	Exact	62	<input type="checkbox"/>	1.00
Scott Volume 5 (2022) - Saudi Arabia	Exact	L61	<input type="checkbox"/>	1.00
Max Mayo (1973) - Saudi Arabia	Exact	88	<input type="checkbox"/>	1.00

Add/Amend Delete

Cancel Delete Save Quit

I use just three **catalogues** for Saudi postage stamps, but the system will support more. I could add Michel and Yvert, but it takes time and there will be little benefit for me.

Some stamps have varieties unlisted in catalogues and I introduced the 'Equivalence' column so that I could define the stamp as being a variety. I could then use the basic catalogue price and adjust it according to the factor I enter.

Collectable Item Maintenance

Item: 1/4 pi Green, overprint gold on red ID: 527 WNS:

<F2> = 'multicoloured'

Short desc: 1/4 pi Green, overprint gold on red Face value: 0.2500 qirsh

General Source Catalogue items Children **Overprints** Notes Printed Part Flags + Attr Status Images RN Design

Overprint	Colour	Orientation	Side	Position	Qty	Variety	Under c
2-line Jeddah	Gold	Upright	Exc	<unspec	1		Red

Add Delete Variety Delete variety

المملكة العربية السعودية
١٤٤٣

Cancel Delete Save Quit

Overprints contain details of the overprints on the stamp and serve two purposes. Firstly, it enables me to search for specific overprints, colour, orientation etc., and secondly it enables my collection documentation software to automatically build a complete description of the stamp.

Collectable Item Maintenance

Item: 1/4 pi Green, overprint gold on red ID: 527 WNS:

<F2> = 'multicoloured'

Short desc: 1/4 pi Green, overprint gold on red Face value: 0.2500 qirsh

General Source Catalogue items Children Overprints Notes Printed Part Flags + Attr Status Images RN Design


Image file	Main image	Auction - Auction House [Sale number], Title
00002080.JPG	<input checked="" type="checkbox"/>	
00004456.JPG	<input type="checkbox"/>	Greg Manning, [205], Sale 205 Including the Thoden Collection
00005206.JPG	<input type="checkbox"/>	Regency-Superior, [64], Public Auction
00005899.JPG	<input type="checkbox"/>	H R Harmer, [56], Sale 2998

Lot: 2915 Amend Add Delete Auction Delete auction View image H pixels: 483 V pixels: 292 Recalc Simulation

Auction notes:
Saudi Arabia-Hejaz, L61, 1925 1/4pi Green, Gold on red overprint. Final bid \$3,068 (includes buyer's premium)

Image details:
pos. 23, NH but with trace of fingerprint on gum, choice Very Fine, a sound genuine example in

Auction details:
Auction number 56 held at USA from 11/11/2010 to 13/11/2010



Cancel Delete Save Quit

Images are usually from my collection, but special items may contain images and details from auction catalogues or other sources.

Collectable Item Maintenance

Item: 1 qirsh blue, handstamp horizontal ID: 10209 WNS

Short desc: 1 qirsh blue, handstamp horizontal Face value: 1.0000 qi

General Source Catalogue items Children Overprints Notes Printed Part Flags + Attr Status Image

Image file	Main image	Auction - Auction House [Sale number], Title
00009345.JPG	<input checked="" type="checkbox"/>	Filatco, Mail Bid Sale, September 1999

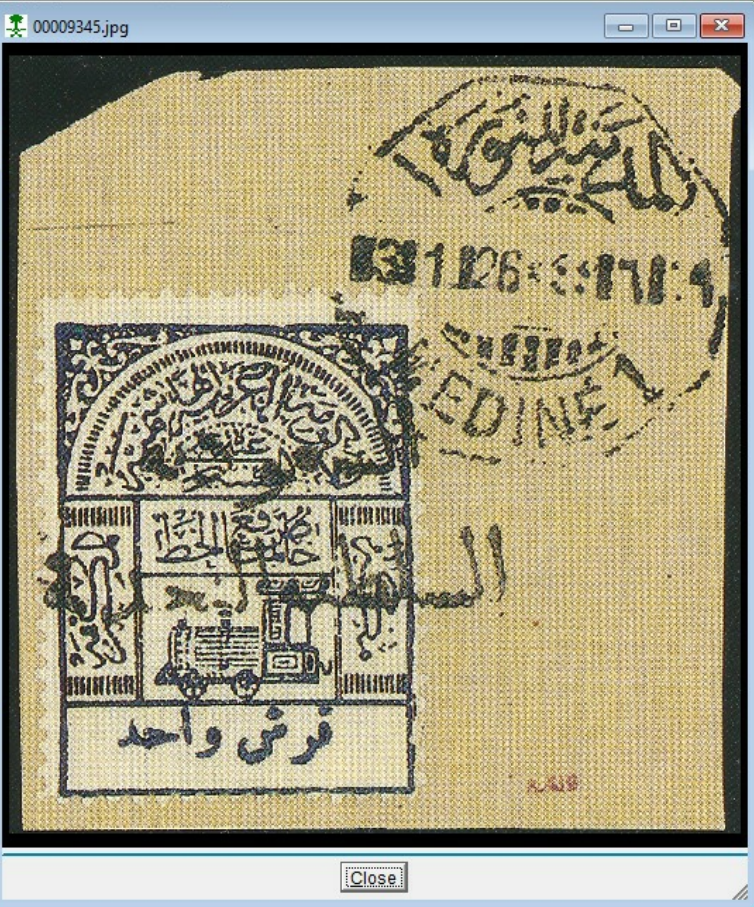
Lot: [] Amend Add Delete Auction Delete auction View image H pixels: 1227 V pixels: 1307

Auction notes:
 Lot 957. 1925 Al-Saudia Al-Sultanat Al-Najdia provisional ovpt. 32mm long, ordered by the postmaster of Medina in support of King Abdulaziz. Two H.S. were used, one measuring 25mm long and the

Image details:
 Postmark 3 January 1926.

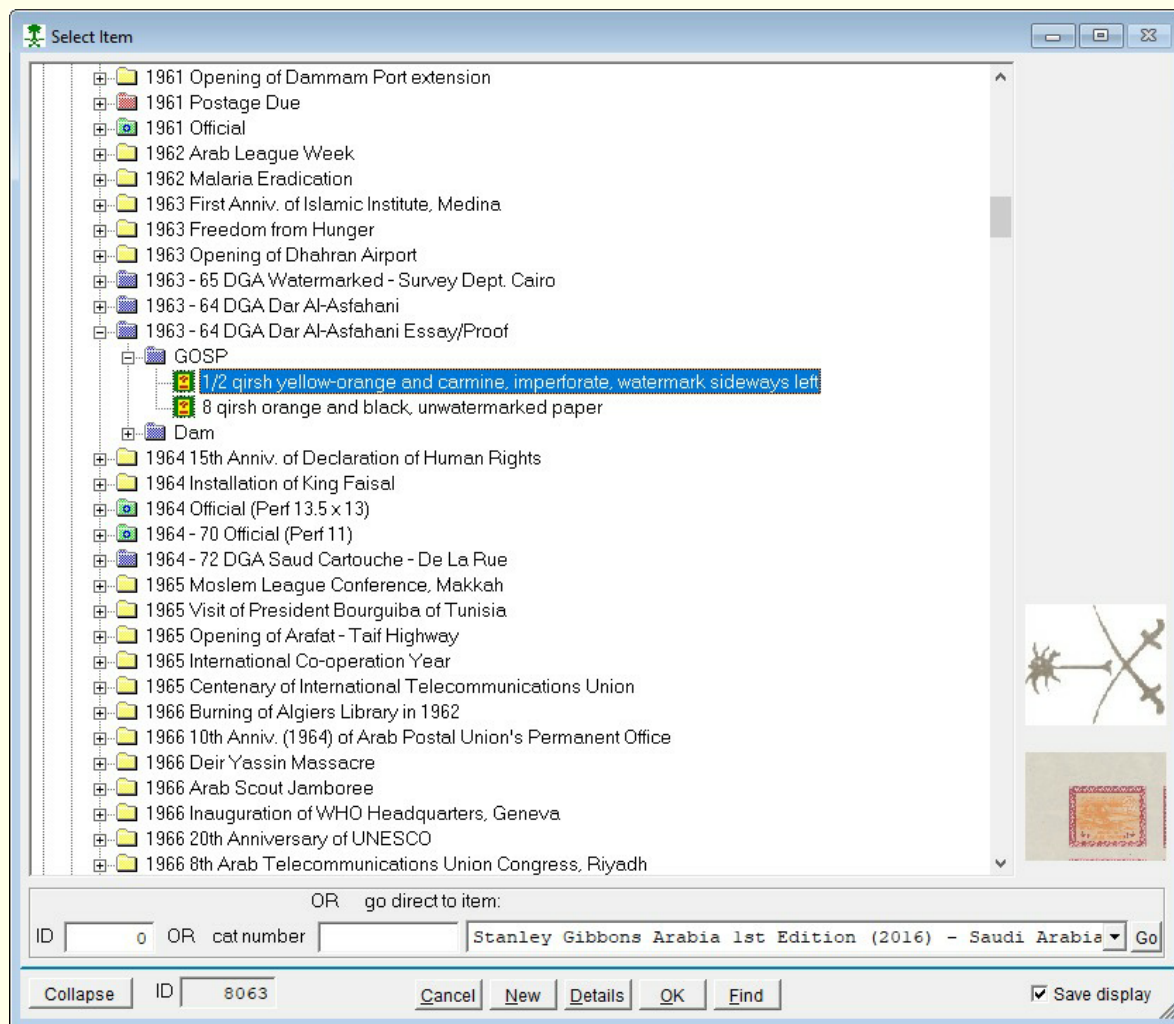
Auction details:
 Auction held at Appleton, Wisconsin on 09/09/1999

Buttons: Cancel Delete Save Quit



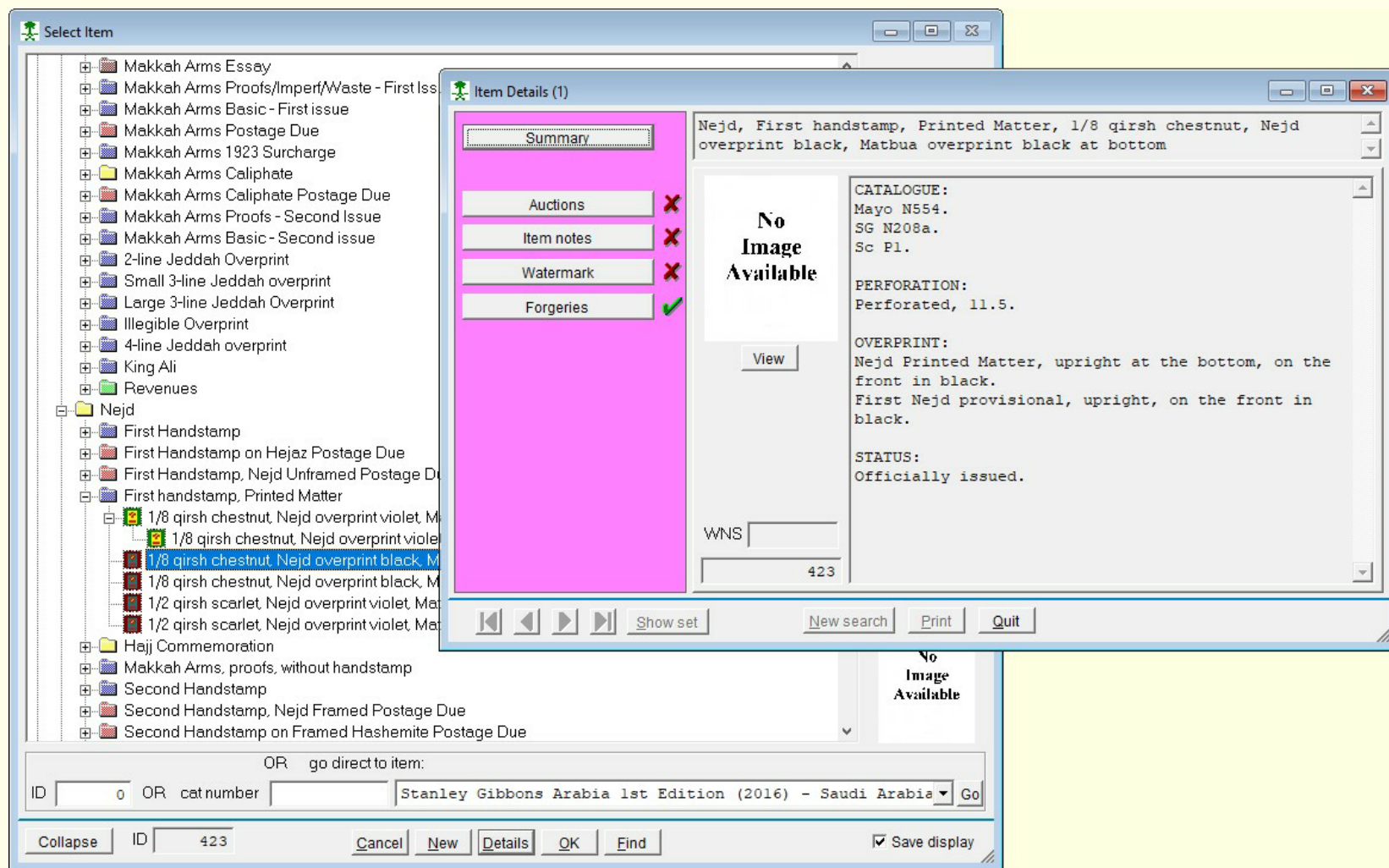
Close

Another fine example of the usefulness of the images for an item is this one from a Filatco auction and by double-clicking the small image a larger and resizable version is displayed.



Another useful feature is the display of the watermark type and direction.

Display Mode



The aim of the display mode is to show item details without the facility to change anything. Quite a lot of development is required, but the images give some idea of what can be done. Note that the descriptions of the overprints were computer generated from the parameters set on the database.

Some discussion regarding the status of items is required. Is the status of the Nejd matbua stamps really official? Perhaps 'status uncertain' would be more accurate.

Display Mode - Forgeries

The screenshot shows a software interface for displaying philatelic items. The main window is titled "Select Item" and contains a tree view of various stamp categories. The "Nejd" folder is expanded, showing several items, including "1/8 qirsh chestnut, Nejd overprint black, Matbua overprint black at bottom".

The "Item Details (1)" window is open, showing the details for the selected item. The "Summary" tab is active, displaying the following text:

Nejd, First handstamp, Printed Matter, 1/8 qirsh chestnut, Nejd overprint black, Matbua overprint black at bottom

The "Set" section shows a list of items, with the selected item highlighted:

Makkah Arms with overprint, Xerography forgery, Nejd printed matter (matbua), 1/8 qirsh red-brown, Nejd overprint black, Matbua overprint black at bottom

The "Forgeries" section is checked, and the following text is displayed:

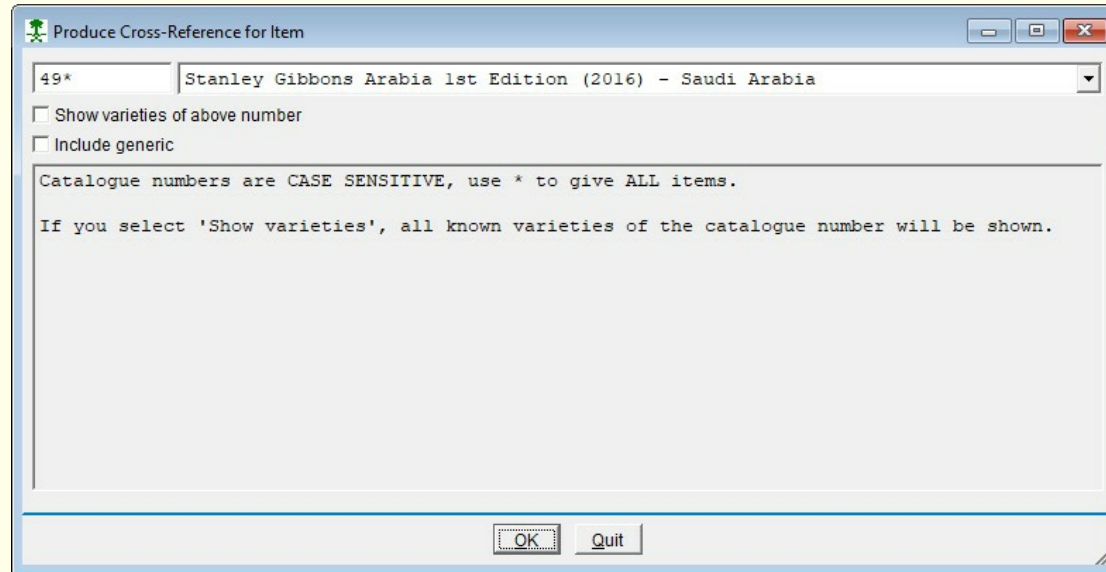
Makkah Arms with overprint, Genuine stamps, Nejd First Handstamp, Printed matter, Forgery type OGC-06, 1/8 qirsh chestnut, Nejd overprint black, Matbua overprint black at bottom

The stamp image is visible on the right side of the details window. The interface includes navigation buttons at the bottom, such as "Show set", "New search", "Print", and "Quit".

We continue with the same stamp, Nejd 1/8 qirsh with matbua handstamp.

The section on known forgeries of the item could be useful when fully populated, but I fear that will be a mammoth task.

Catalogue Cross-Reference



Any reader still awake may have come to the conclusion that if multiple catalogues can be used for each item then a catalogue cross-reference should be possible. It is possible and it is included.

In this example, I would like a cross-reference for all items having a Stanley Gibbons catalogue number starting with 49. For this, I used the wildcard character * following 49.

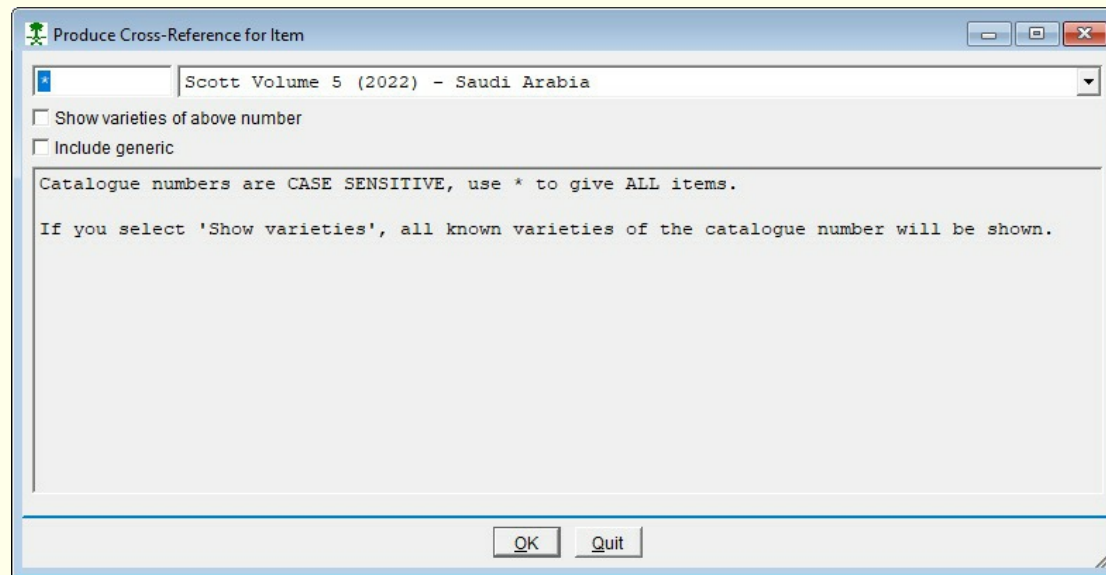
Catalogue Cross-Reference - SG 49*

Item	SG	Scott	Mayo
Hejaz, Makkah Arms 1923 Surcharge, 10 qirsh on 5 qirsh olive	49	L41	66
Hejaz, Makkah Arms 1923 Surcharge, 10 qirsh on 5 qirsh olive surch inverted	49a	L41b	66i
Hejaz, Makkah Arms 1923 Surcharge, 10 qirsh on 5 qirsh olive surch double one inverted	49b	L41a	66e
Saudi Arabia, 1963 - 64 DGA Dar Al-Asfahani, Convair 340, 3 qirsh blue and carmine, watermark sideways left	490	C30	A1026L
Saudi Arabia, 1963 - 64 DGA Dar Al-Asfahani, Convair 340, 3 qirsh blue and carmine, watermark sideways right	490	C30	A1026R
Saudi Arabia, 1963 - 64 DGA Dar Al-Asfahani, Convair 340, 10 qirsh brown-purple and black, watermark sideways left	491	C31	A1027L
Saudi Arabia, 1963 - 64 DGA Dar Al-Asfahani, Convair 340, 10 qirsh brown-purple and black, watermark sideways right	491	C31	A1027R
Saudi Arabia, 1963 - 64 DGA Dar Al-Asfahani, Convair 340, 20 qirsh emerald and orange-brown, watermark sideways left	492	C32	A1028L
Saudi Arabia, 1963 - 64 DGA Dar Al-Asfahani, Convair 340, 20 qirsh emerald and orange-brown, watermark sideways right	492	C32	A1028R
Saudi Arabia, 1964 15th Anniv. of Declaration of Human Rights, Perf 13 x 13.5, 3 qirsh blue, violet and salmon, watermark upright	493	282	1029
Saudi Arabia, 1964 15th Anniv. of Declaration of Human Rights, Perf 13 x 13.5, 3 qirsh blue, violet and salmon, watermark inverted	493	282	1029V
Saudi Arabia, 1964 15th Anniv. of Declaration of Human Rights, Perf 13 x 13.5, 6 qirsh blue, yellow-green and pale blue, watermark upright	494	283	1030
Saudi Arabia, 1964 15th Anniv. of Declaration of Human Rights, Perf 13 x 13.5, 6 qirsh blue, yellow-green and pale blue, watermark inverted	494	283	1030V
Saudi Arabia, 1964 15th Anniv. of Declaration of Human Rights, Perf 13 x 13.5, 9 qirsh blue, brown and flesh, watermark upright	495	284	1031
Saudi Arabia, 1964 15th Anniv. of Declaration of Human Rights, Perf 13 x 13.5, 9 qirsh blue, brown and flesh, watermark inverted	495	284	1031V
Saudi Arabia, 1964 Installation of King Faisal, 4 qirsh grey-blue and emerald, watermark sideways left	496	285	1032L
Saudi Arabia, 1964 Installation of King Faisal, 4 qirsh grey-blue and emerald, watermark sideways right	496	285	1032R

Close Item details Print Export Save as UDS Quit

The results are available in a fraction of a second and far easier than any manual method!

Full Catalogue Cross-Reference



If, instead of searching for SG 49*, we searched for just the wildcard *, we should get a complete catalogue cross-reference. Also, if we use Scott as the catalogue, the resultant listing will start at Scott L1.

Catalogue Cross-Reference - *

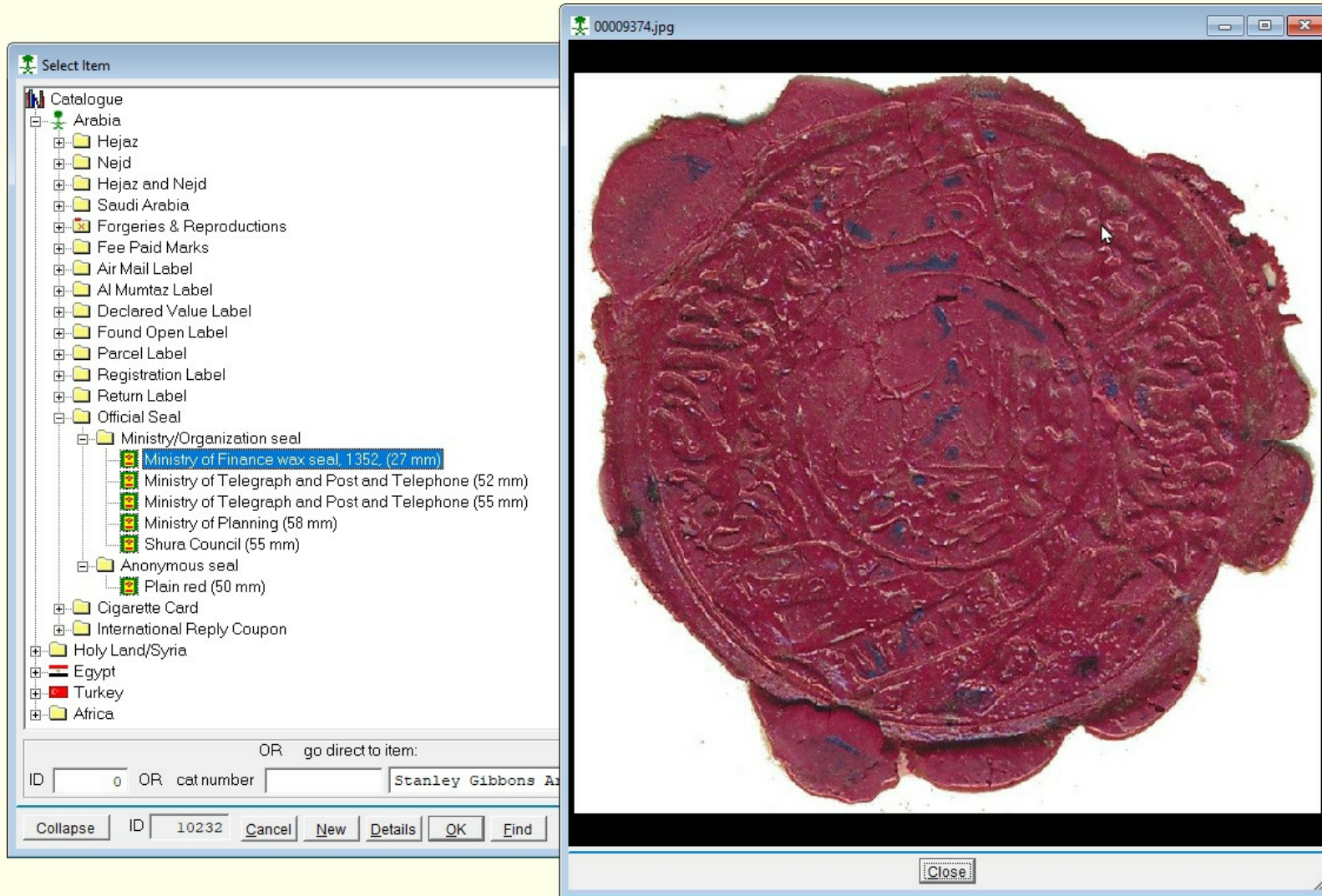
Item	SG	Scott	Mayo
▶ Hejaz, Survey of Egypt, Perforated 10 or 12, 1/4 qirsh green, perf 12	1	L1	6
Hejaz, Survey of Egypt, Perforated 10 or 12, 1/2 qirsh scarlet, perf 12	2	L2	4
Hejaz, Survey of Egypt, Perforated 10 or 12, 1 qirsh dark blue, perf 12	3	L3a	2
Hejaz, Survey of Egypt, Perforated 10 or 12, 1 qirsh dark blue, perf 10 x 12	3a	L3b	2M
Hejaz, Survey of Egypt, Perforated 10 or 12, 1/2 qirsh scarlet, perf 10	5	L2a	3
Hejaz, Survey of Egypt, Perforated 10 or 12, 1 qirsh blue, perf 10	6	L3	1
Hejaz, Survey of Egypt, Roulette 20, 1/8 qirsh yellow	7	L4	11
Hejaz, Survey of Egypt, Roulette 20, 1/4 qirsh green	8	L5	8
Hejaz, Survey of Egypt, Roulette 20, 1/2 qirsh scarlet	9	L6	9
Hejaz, Survey of Egypt, Roulette 20, 1 qirsh blue	10	L7	10
Hejaz, Survey of Egypt, Zig-zag Roulette 13, 1 pa dull purple	11	L8	17
Hejaz, Survey of Egypt, Zig-zag Roulette 13, 1/8 pi yellow	12	L9	19
Hejaz, Survey of Egypt, Zig-zag Roulette 13, 1/4 pi green	13	L10	20
Hejaz, Survey of Egypt, Zig-zag Roulette 13, 1/2 pi red	14	L11	12
Hejaz, Survey of Egypt, Zig-zag Roulette 13, 1 pi blue	15	L12	13
Hejaz, Survey of Egypt, Zig-zag Roulette 13, 2 pi claret	16	L13	18
Hejaz, Survey of Egypt, Postage Due, 20 pa red	D17	LJ1	T14
Hejaz, Survey of Egypt, Postage Due, 1 pi blue	D18	LJ2	T15
Hejaz, Survey of Egypt, Postage Due, 2 pi claret	D19	LJ3	T16
Hejaz, Unframed Hashemite, Roulette 20, 1/8 pi yellow	18	L15c	22
Hejaz, Unframed Hashemite, Roulette 20, 1/8 pi yellow, overprint inverted	18a	L15d	22i
Hejaz, Unframed Hashemite, Roulette 20, 1/4 pi green	19	L16c	23
Hejaz, Unframed Hashemite, Roulette 20, 1/4 pi green, overprint inverted	19a	L16d	23i
Hejaz, Unframed Hashemite, Roulette 20, 1/2 pi red	20	L17b	24

Close Item details Print Export Save as UDS Quit

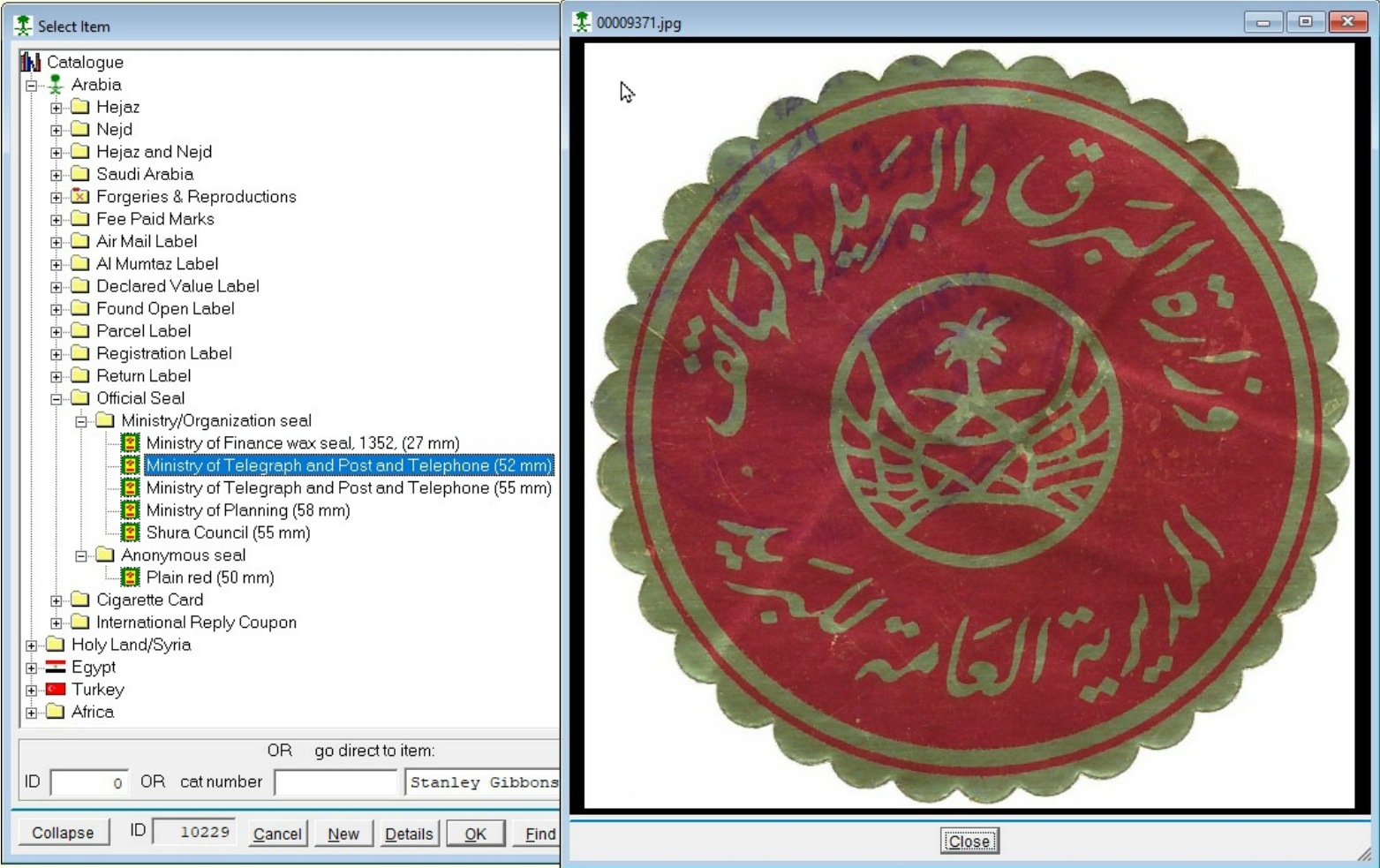
This search is quite demanding and takes a few seconds, but still very quick considering four catalogues are involved (the Medical Aid and Map stamp also use the Thoden catalogue).

Not only stamps! - Official Seals

Ministry of Finance Wax Seal 1352



Ministry of Telegraph and Post and Telephone Paper Seal



Digital Catalogue - Saudi Arabia and Beyond

This catalogue could be developed into a mini encyclopaedia, but would require a team to enter the significant amount of data. Even in its current form, it requires much data to be added for completeness.

There are other problems to overcome before the product is suitable for sale; the main problem being changes in the operating system. Every now and then, changes made by Microsoft to their Windows© software causes problems with the Catalogue software. For a product to be saleable, a good customer care organization is required and I am not in the position to provide that.

However, all is not lost. It should be possible to provide a catalogue written in standard HTML with no fancy bells and whistles. That should then work on any browser on any platform. I will think about it.

Martin Lovegrove

July 2022